

Decking Installation Guide



Fixing Decking to a Balcony frame

Fitting Decking to Concrete Balconies and Roof Terraces

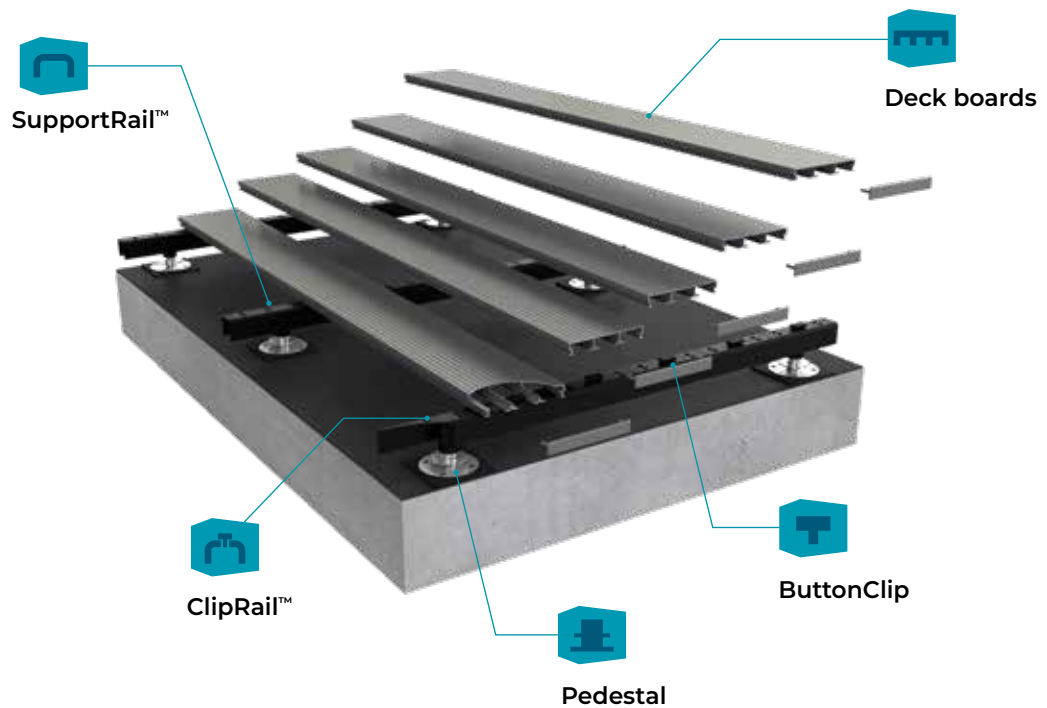
Contents

A Fixing Decking to a Balcony frame 3

B Fitting Decking to Concrete Balconies and Roof Terraces 8

* This document is intended as a guide. Installers should be competent and qualified and use due care and attention in the installation of the decking and support system.

System Components



For further information:

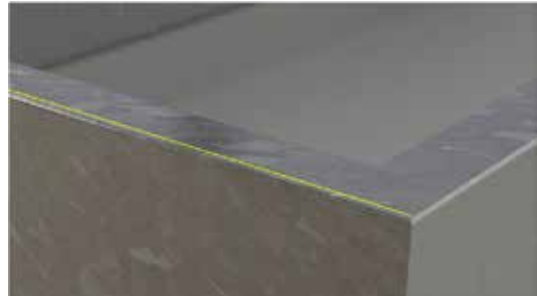
T: +44 (0)3300 94 94 11

E: sales@mydek.com

www.mydek.com

A Fixing Decking to a Balcony frame with Basic Clips

1. Mark a straight line along the outer edge of the balcony (nearest the balustrade) 3mm in from the edge of the frame.



2. Cut the first **ClipRail™** to the correct length to fit the balcony. Align the end of the first **ClipRail™** with the marked line and clamp it to the balcony frame.



3. Fix **ClipRail™** to the balcony construction (on top of each rafter) using M8 bolts through the holes in the profile. Tighten finger-tight only. (it is advisable to use holes that are not below the first or last board)



4. Repeat steps 1-4 With each **ClipRail™**, ensuring that each **ClipRail™** starts exactly on the marked line.



For further information:

T: +44 (0)3300 94 94 11

E: sales@mydek.com

www.mydek.com

A Fixing Decking to a Balcony frame with Basic Clips

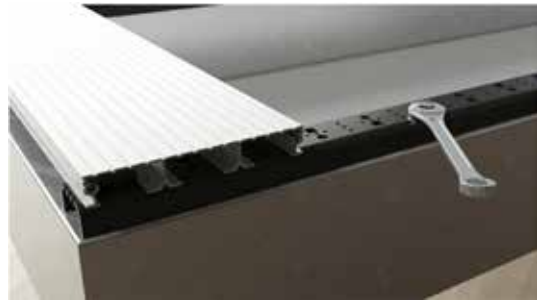
- 5.** Fit **Button Clips** to the first fixing point on each **ClipRail™** to retain the end decking board.



- 6.** Cut the first decking board to length (Vista available precut to bespoke lengths) and lay onto the first row of clips. Adjust alignment of **ClipRails™** as necessary. Once aligned, press down firmly to secure the board to each **ClipRail™**.



- 7.** Secure the **ClipRail™** to the balcony frame by tightening all fixings.



- 8.** Place the Basic Clips up to the edge of the board and over the fixing holes in the **ClipRail™**. Insert a fixing screw about half-way.



For further information:

T: +44 (0)3300 94 94 11

E: sales@mydek.com

www.mydek.com

A Fixing Decking to a Balcony frame with Basic Clips

- 9.** Lay the second board up to the row of clips and place the next row of clips up to the edge of the board and insert screws half-way.



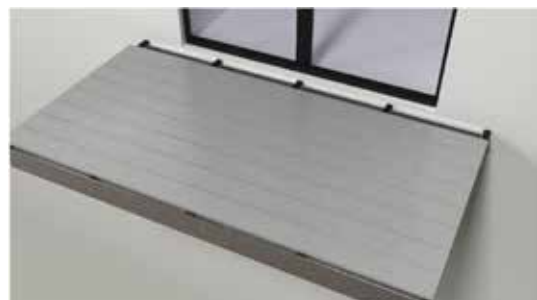
- 10.** Tighten the previous row of fixings to secure the first board.



- 11.** Place the next board up to the row of loose fixings, followed by the next set of clips and screws as in step 9.



- 12.** Tighten the previous row of fixings. Repeat until all complete boards have been laid.



For further information:

T: +44 (0)3300 94 94 11

E: sales@mydek.com

www.mydek.com

A Fixing Decking to a Balcony frame with Basic Clips

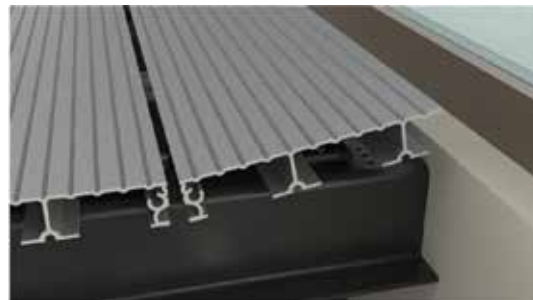
- 13.** Cut the last board to fit (to edge of balcony or into doorways as necessary) using appropriate metal-cutting blades in suitable power tools.



- 14.** Fix last row of **Button Clips** in a suitable position to receive the last board.



- 15.** Tilt the board and slide it up to the last row of fixings before pushing it firmly down onto the **Button Clips**.



- 16.** Tighten the previous row of fixings.



For further information:

T: +44 (0)3300 94 94 11

E: sales@mydek.com

www.mydek.com



B Fitting Decking to Concrete Balconies and Roof Terraces

For further information:

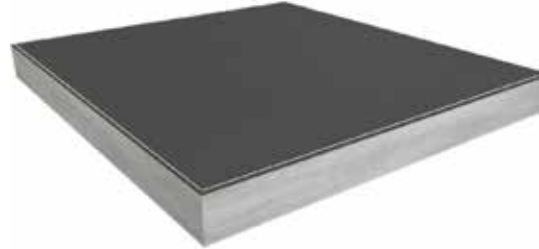
T: +44 (0)3300 94 94 11

E: sales@mydek.com

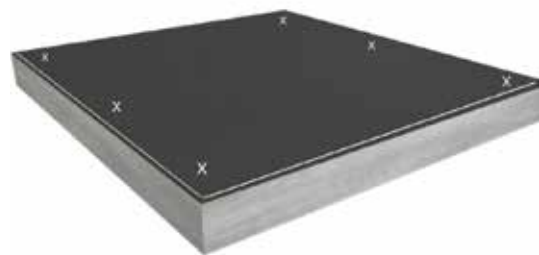
www.mydek.com

B Fitting Decking to Concrete Balconies and Roof Terraces

1. Set out your starting lines where the edge and the end of the first board will be laid.

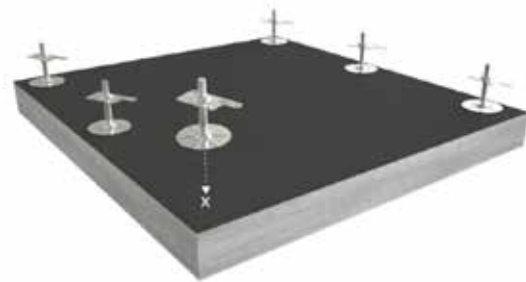


2. Set out the area for the **Pedestals** – every 600mm along the length of the decking boards (or at appropriate spacing to support the board used), and every 1200mm across the direction of the boards (or at appropriate spacing to suit the **SupportRail™** used). See table below:

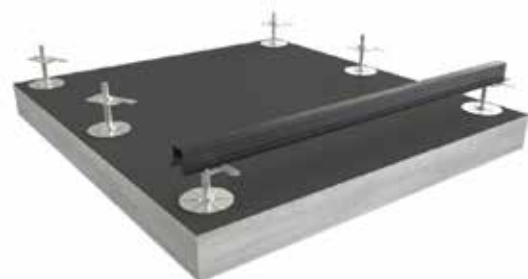


Pedestal Centres	Along Decking	Along SupportRail™
85 SupportRail™	600mm	1500mm
55 SupportRail™	600mm	1200mm

3. Place **Pedestals** at the points marked out and adjust each so that the top flange is approx. 75mm below the desired finished decking level.



4. Lay the first **SupportRail™** onto the first row **Pedestals** (cut to length if required), aligned with the starting line, and lock each Pedestal onto the **SupportRail™**, ensuring that every **SupportRail™** is has a **Pedestal** at each end.



For further information:

T: +44 (0)3300 94 94 11

E: sales@mydek.com

www.mydek.com

B Fitting Decking to Concrete Balconies and Roof Terraces

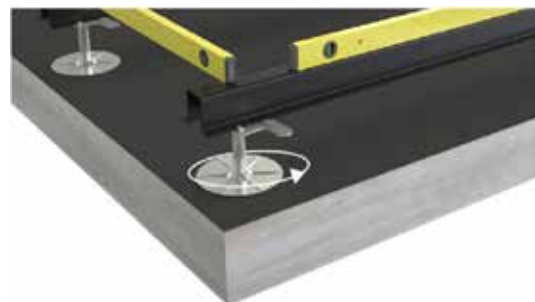
- 5.** Complete the first run of **SupportRail™** with as many lengths as necessary, cutting the last length to suit.



- 6.** Start the next run of **SupportRail™** as per step 4. Ensuring that the run starts with a full board-module and is aligned to the starting line. The **SupportRail™** can be cut to length, and the offcut used as long as the cut end is trimmed to a full board-module. (Cut across the board along the row of three holes)



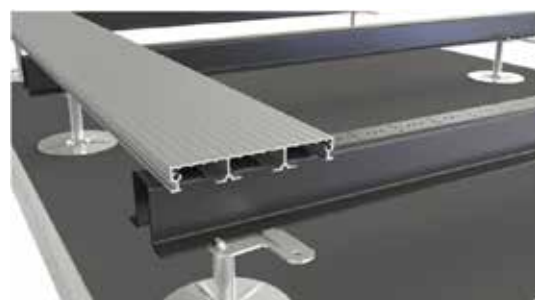
- 7.** Adjust the pedestals as necessary to level the **SupportRails™**.



- 8.** Fix a **Button Clip** to the first set of three holes in each rail.



- 9.** Lay the first board along the starting edge and check that all the **SupportRails™** are correctly aligned.



For further information:

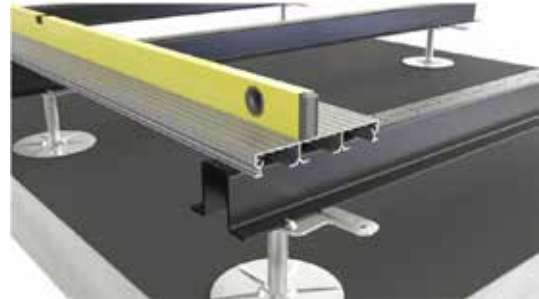
T: +44 (0)3300 94 94 11

E: sales@mydek.com

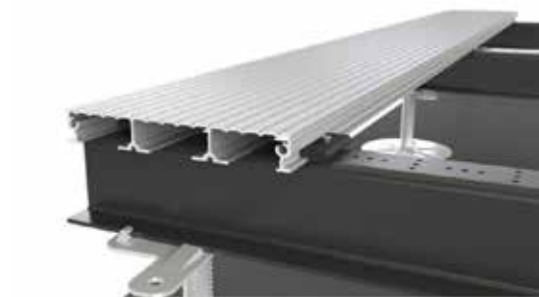
www.mydek.com

B Fitting Decking to Concrete Balconies and Roof Terraces

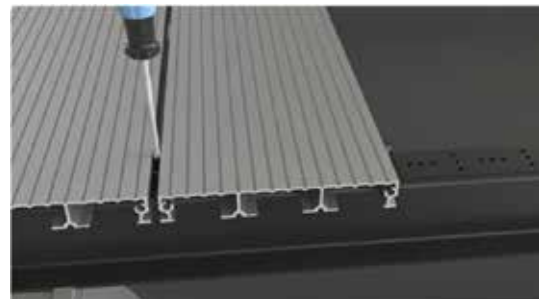
- 10.** Clip the first board down to the **SupportRails™**. Check alignment and levels and adjust as necessary.



- 11.** Place the **Basic Clips** up to the edge of the board and over the fixing holes in the cliprail. Insert a fixing screw about half-way.



- 12.** Lay the second board up to the row of clips and place the next row of clips up to the edge of the board and insert screws half-way.



- 13.** Tighten the previous row of fixings to secure the first board.

- 14.** Place the next board up to the row of loose fixings, followed by the next set of clips and screws as in step 9.

- 15.** Tighten the previous row of fixings. Repeat until all complete boards have been laid.



For further information:

T: +44 (0)3300 94 94 11

E: sales@mydek.com

www.mydek.com

B Fitting Decking to Concrete Balconies and Roof Terraces

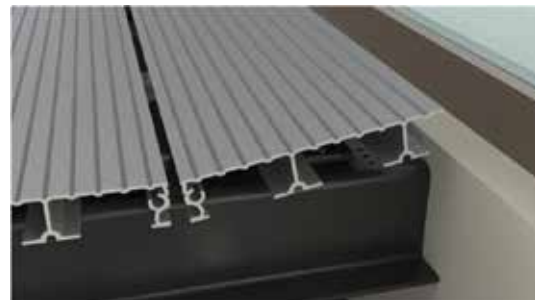
- 16.** Cut the last board to fit (to edge of balcony or into doorways as necessary) using appropriate metal-cutting blades in suitable power tools.



- 17.** Fix last row of **Button Clips** in suitable positions to receive the last board.



- 18.** Tilt the board and slide it up to the last row of fixings before pushing it firmly down onto the **Button Clips**.



- 19.** Tighten the previous row of fixings.

- 20.** Continue the first run of boards with full or cut lengths as necessary, joining the board ends with joining pins ensuring that the board ends are supported on a **SupportRail™**.



- 21.** Continue laying boards and joining them as necessary to complete the decking. Boards can be cut or scribed around obstacles using power tools with appropriate metal-cutting blades



For further information:

T: +44 (0)3300 94 94 11

E: sales@mydek.com

www.mydek.com



MYDEK[®]
Non-combustible decking systems

For further information:
T: **+44 (0)3300 94 94 11**
E: **sales@mydek.com**

www.mydek.com