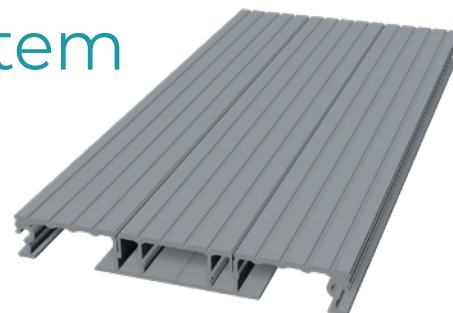


Delta20 Decking System

Overview

A durable, non-combustible, aluminium decking system designed to enhance balconies and terraces, available in a range of standard finishes. Compatible with the full range of support systems from MyDek for fast and accurate installation. MyDek offers unrivalled speed, accuracy and choice in decking solutions.



FEATURES:

- Fully certified
- Non-combustible
- Lightweight
- Concealed fixings
- Slip resistant
- 30 year warranty
- 60 year design life

DIMENSIONS:

| | |
|---------------------|---|
| Board width x depth | 144 x 20mm (150mm module) |
| Board length | 4.2m or cut-to-length (subject to conditions) |
| Weight | 12.47 kg/sqm |

MATERIAL:

| | |
|---------------------|--|
| Board | Aluminium grade 6063-T6 |
| Expansion allowance | 1mm per linear metre |
| Finish | Polyester Powder Coating – 80micron slip-resistant |

PRODUCT CODES:

| | |
|------|---------------|
| BD09 | Decking board |
|------|---------------|



Fairbourne Drive, Milton Keynes MK10 9RG

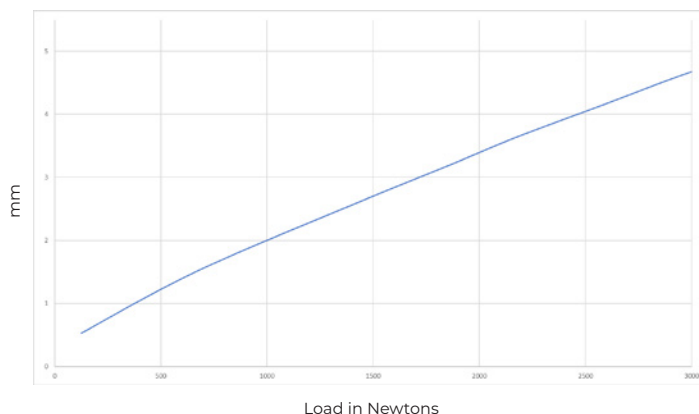
T: +44 (0)3300 94 94 11

E: sales@mydek.com

www.mydek.com

STRENGTH:

Deflection under load for various joist centres



PERFORMANCE STANDARDS:

| QUALITY | STANDARD | VALUE | LIMIT |
|---|----------------------|--|----------------|
| Deflection – 80KG at 600mm span | EN310 | 1.59mm | <5mm |
| Deflection – 2KN at 600mm span | EN310 | 3.35mm | <5mm |
| Slip resistance - Wet | BS7976 -2 | | |
| | Pendulum Slip Test | 39.5 PTV | >36 |
| Slip resistance - Dry | | 59 PTV | >36 |
| Coefficient of thermal expansion | N/A | 0.024mm/m/°C | - |
| Coating Durability | EN12206, EN13438 | Qualicoat Class 2 | - |
| Accelerated wear test (biomechanical - see appendix 1.1) | TM391:2016 | 'Very Slight' at 50K 'Slight' at 100K | - |
| Furniture leg test (scratching) | EN424:2001 | No damage Slight transfer | |
| Fire test (polyester powder coated) | EN 13501 – 1 A1:2013 | A2-s1,d0 | A2-s1,d0 |
| Coating Adhesion | ISO-0 ASTM-5B | No separation | - |
| UV Stability | ISO2810 | Class 2 | 3-year Florida |

COLOUR RANGE:

For full colour range of non-slip textured powder coatings visit www.mydek.com

APPLICATIONS:

For use on balconies, walkways, roof terraces, leisure areas and patios.



Fairbourne Drive, Milton Keynes MK10 9RG

T: +44 (0)3300 94 94 11

E: sales@mydek.com

www.mydek.com

INSTALLATION:

Fixed to steel structure or MyDek Support Systems with self drilling screws.

STORAGE AND HANDLING:

Profiles are packaged with protection against scratching and contamination, and supplied with appropriate support (e.g. stillage or pallet). Ensure that this level of protection is maintained until installation, including storage in dry conditions and support along the length of the profiles. Improper storage may lead to damage that falls outside the warranty.

ACCESSORIES:

For full range of accessories visit www.mydek.com

MANUFACTURER:

MyDek Limited
Fairbourne Drive
Milton Keynes
MK10 9RG

E: sales@mydek.com
T: **+44 (0)3300 94 94 11**
www.mydek.com

Summary

Safe.

All aluminium used to create MyDek is compliant with current industry and manufacturing standards. The products are fully tested for durability, deflection and slip resistance. All MyDek products are certified to the relevant fire standards.

Smart.

Under normal usage, MyDek is easy to maintain - simply wash the deck surface as needed without abrasive chemicals. MyDek is one of the lowest-maintenance systems available.

The unique ClipRail™ and SupportRail™ systems make MyDek installation fast and simple.

Sustainable.

The 60-year service life and ability to be recycled make MyDek a sustainable building feature. The longer life cycle reduces the energy required to produce replacements.

Aluminium wastage created through any of the manufacturing process is fully recyclable and is used to create other aluminium products.



Fairbourne Drive, Milton Keynes MK10 9RG

T: **+44 (0)3300 94 94 11**

E: sales@mydek.com

www.mydek.com

Appendix

1. BIOMECHANICAL ACCELERATED WEAR TEST SATRA TM391:2016

This test has been carried out in accordance with SATRA TM391:2016 for assessing floor coverings using a walking machine, where a standard shoe (having a patterned sole with a tread depth of 5mm ± 0.5mm and Shore A hardness of 54 is mounted on a foot form that is attached to a walking machine. The flooring specimen is subjected to a cyclic walking action from the standard shoe, where the specimen rotates incrementally whilst the forepart is in contact with the sample. These individual footsteps are designed to replicate a mixture of walking in a straight line and turning a corner. The flooring sample under test rotates such that it completes a 360° rotation every 150 footfalls.

2. FURNITURE LEG TEST EN 424:2001

This test simulates the movement of furniture or the likes on floor surfaces, and assesses the impact on the finish of the product both in terms of damage to the surface and transfer of marking onto the surface.

**Results: EN 424:2001 – Resilient floor coverings –
Determination of the effect of simulated
movement of a furniture leg. ⁽²⁾⁽³⁾**

| | | Direction of manufacture | 90° to the direction of manufacture |
|--------------------------------------|---|--------------------------|-------------------------------------|
| Type 0 with an applied mass of 32kg | Flatness Deterioration | None | None |
| | Damage which partially destroys surface | None | None |
| | Cuts of varying depth | None | None |
| | Penetrating Edges | None | None |
| | Transfer of brass | None | None |
| Type 2 with an applied mass of 100kg | Flatness Deterioration | None | None |
| | Damage which partially destroys surface | None | None |
| | Cuts of varying depth | None | None |
| | Penetrating Edges | None | None |
| | Transfer of brass | Very slight | Slight |
| Type 3 with an applied mass of 70kg | Flatness Deterioration | None | None |
| | Damage which partially destroys surface | None | None |
| | Cuts of varying depth | None | None |
| | Penetrating Edges | None | None |
| | Transfer of brass | None | Slight |



Fairbourne Drive, Milton Keynes MK10 9RG

T: +44 (0)3300 94 94 11

E: sales@mydek.com

www.mydek.com



Fairbourne Drive, Milton Keynes MK10 9RG

T: **+44 (0)3300 94 94 11**

E: **sales@mydek.com**

www.mydek.com



Fairbourne Drive, Milton Keynes MK10 9RG

T: **+44 (0)3300 94 94 11**

E: **sales@mydek.com**

www.mydek.com



Fairbourne Drive, Milton Keynes MK10 9RG

T: **+44 (0)3300 94 94 11**

E: **sales@mydek.com**

www.mydek.com