



Installation Guide

- A** Substructure Installation
- B** Delta Deck Board Installation
- C** Vista/Innova Deck Boards Installation

Contents

Introduction

Tools and Equipment3

Health and Safety Equipment..... 4

A Substructure Installation

Box rail and Cleat Substructure System.....5

Premium SupportRail and Pedestal System 8

B Delta Deck Board installation

Delta Decking Board Install10

Drainage Channel installation (Delta30 only) 11

C Vista/Innova Deck Board installation

Decking Board Install onto Pedestals12

D FAQ's

.....15

E Care and Maintenance

.....16



For further information:

T: +44 (0)3300 94 94 11

E: sales@mydek.com

www.mydek.com

Introduction

Welcome to your MyDek installation guide. This guide has been produced to facilitate successful installation of your deck system.

As with any successful project, having the right tools for the job is an essential part of success and we've listed some recommendations below:

Tools and Equipment List



Circular Saw/ Chop Saw

with blade for
cutting aluminium

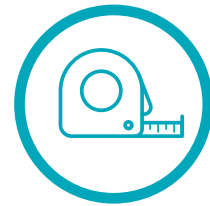


Jigsaw

with blade for
cutting aluminium



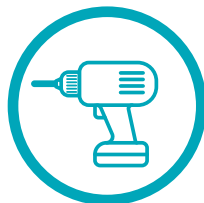
Pencil



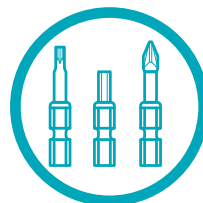
Tape measure



Spirit level/ Laser level



Cordless drill or screwdriver



Driver bits:

- Long shank T15 Torx bit (Vista and Innova systems)
- 8mm Hex driver (delta boards and Box rails systems)
- PZ2 Driver for end cap and edge trim screws



Vacuum cleaner

for dust/filings
extraction

For further information:

T: +44 (0)3300 94 94 11

E: sales@mydek.com

www.mydek.com



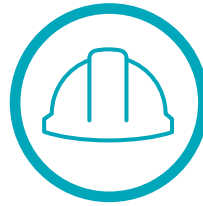
Minimum Health and Safety Equipment



**Goggles or
safety glasses**



Gloves



Hard Hat



Safety boots

Important!

Cutting aluminium produces swarf and sharp filings. Additionally, cut edges can be sharp. Always ensure you wear suitable protective clothing and thoroughly remove any burrs caused by cutting.



For further information:

T: +44 (0)3300 94 94 11

E: sales@mydek.com

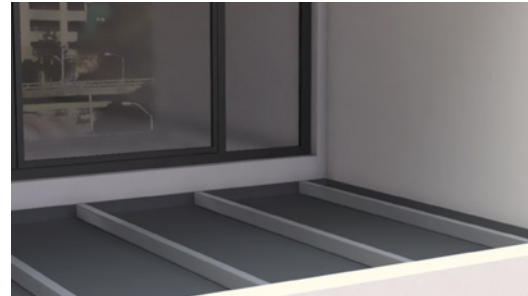
www.mydek.com

A Substructure Installation

BoxRail™ and Cleat Substructure System

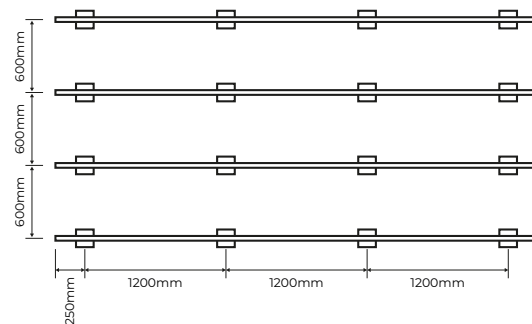
1. Plan and set out the balcony area with **BoxRail™** joists placed loosely at the correct spacings to accept the decking.

Ensure that there are joists close to the ends of the decking boards to provide support (preferably not more than 150mm cantilever at the end of board)

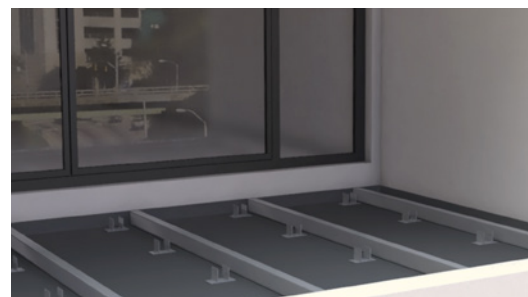


60 x 40mm **Boxrail™** or 50mm **Support Rail** – rails should be spaced at maximum 600mm apart with cleats at maximum 1200mm apart along the rail. Max overhang of joist beyond pedestal or cleat 250mm.

NOTE: if using the **Delta30** deck board, support rails can be spaced at maximum of 1000mm apart.



2. Set out a cleat foot at each point required using appropriate spacings along the length of the **Boxrail™**, usually 1200 - 1500 mm (refer to technical data sheets if unsure)



For further information:

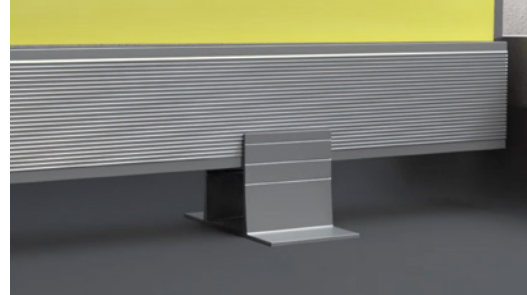
T: +44 (0)3300 94 94 11

E: sales@mydek.com

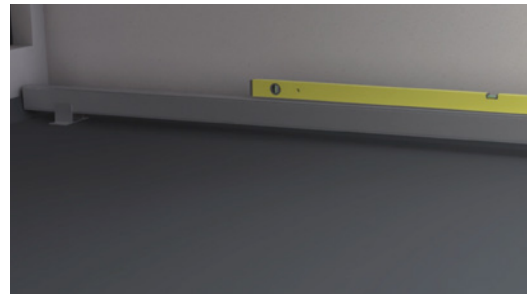
www.mydek.com



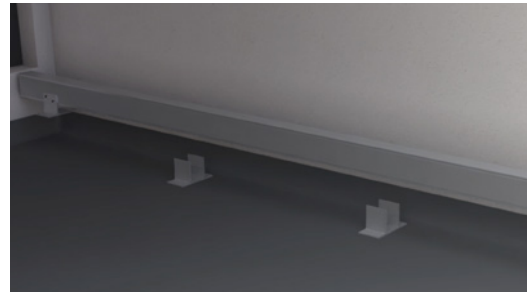
- 3.** Clip the first cleat foot onto one end of the **BoxRail™** and adjust to approximately the right height.



- 4.** Repeat at the other end. Place the **BoxRail™** carefully into position at one edge of the balcony and check level. Adjust the **BoxRail™** in the feet till a level position is achieved.



- 5.** Fit additional feet at approximate spacings in between the first and last foot, and adjust for height.



- 6** Using the groove as a positioning guide position 2 screws approx. 30mm apart to each side using the self drilling screws provided and fix through each cleat foot into the **BoxRail™**.



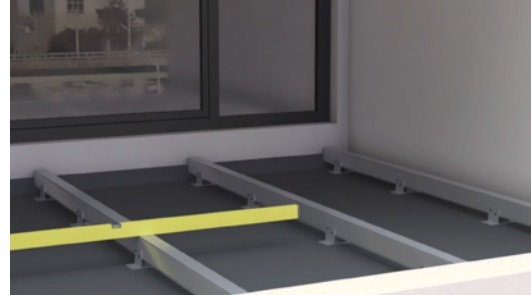
For further information:

T: +44 (0)3300 94 94 11

E: sales@mydek.com

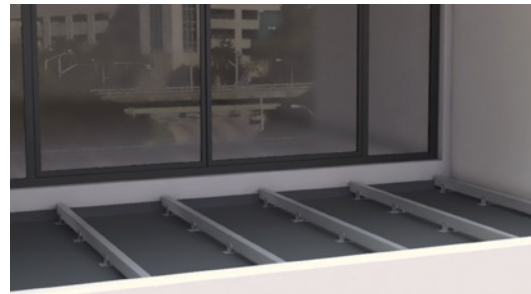
www.mydek.com

- 7.** Repeat steps 3-5 on the other joists positions, levelling each joist with the previous one to maintain a level structure for the decking.



- 8.** Install decking as per Decking Installation Guide, later in this manual.

NOTE: Max overhang of board beyond joist: 150mm (200mm for **Delta30**)



IMPORTANT NOTE!

MyDek decking systems are lightweight, however any live and permanent loads will be transferred through the pedestals/supports and can impose significant point loads. Consideration should be given to the terrace surface to ensure;

- i. The structure is sufficiently strong and robust to accept the expected loads without undue deflection
- ii. Any waterproofing membrane will not be damaged by the proposed point loads throughout its design live. (please consult manufacturers guidance)
- iii. The surface is smooth enough to ensure full contact between baseplate and surface.

Should there be any concerns, consideration should be given to either providing spreader plates under the supports, or reducing the support centres. **MyDek** offer a range of spreader plates and can offer advice on indicated expected loads on request.

For further information:

T: +44 (0)3300 94 94 11

E: sales@mydek.com

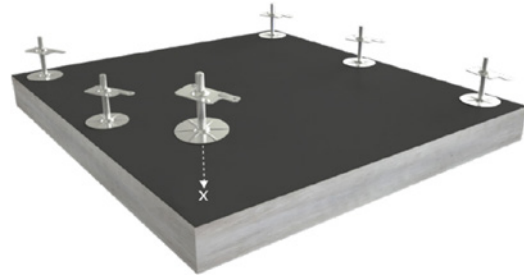
www.mydek.com



A Substructure Installation

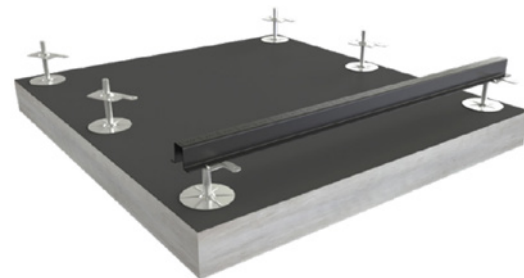
Premium SupportRail and Pedestal System

1. Set out **Pedestals** across the area as a maximum spacing of 600mm centres for the rails and pedestals at a maximum of 1200mm along the rails.



| Pedestal Centres | Along Decking | Along SupportRail™ |
|------------------------|---------------|--------------------|
| 55 SupportRail™ | 600mm | 1200mm |

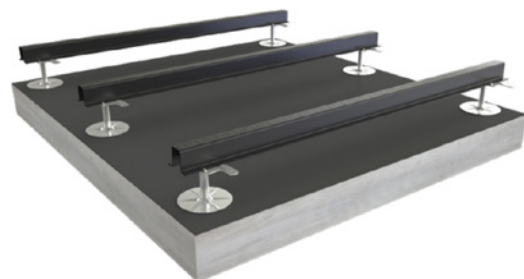
2. Lay the first **SupportRail™** onto the first row of **Pedestals** (cut to length if required), aligned with the starting line, and lock each Pedestal onto the **SupportRail™**, ensuring that every **SupportRail™** has a **Pedestal** at each end.



Maximum recommended overhang of **SupportRail™** beyond the pedestal is 200mm

3. Complete the first run of **SupportRail™** with as many lengths as necessary, cutting the last length to suit.

Note: Pedestals will need to be positioned to support at any joints between the rail.



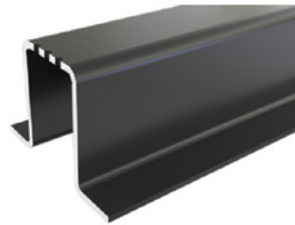
For further information:

T: +44 (0)3300 94 94 11

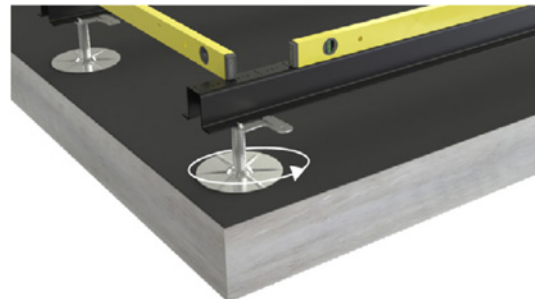
E: sales@mydek.com

www.mydek.com

- 4.** Start the next run of **SupportRail™** as per step 2. Ensuring that the run starts with a full board-module and is aligned to the starting line. The **SupportRail™** can be cut to length, and the offcut used as long as the cut end is trimmed to a full board-module.



- 5.** Adjust the pedestals as necessary to level the **SupportRails™**.



IMPORTANT NOTE!

MyDek decking systems are lightweight, however any live and permanent loads will be transferred through the pedestals/supports and can impose significant point loads. Consideration should be given to the terrace surface to ensure;

- i. The structure is sufficiently strong and robust to accept the expected loads without undue deflection
- ii. Any waterproofing membrane will not be damaged by the proposed point loads throughout its design live. (please consult manufacturers guidance)
- iii. The surface is smooth enough to ensure full contact between baseplate and surface.

Should there be any concerns, consideration should be given to either providing spreader plates under the supports, or reducing the support centres. **MyDek** offer a range of spreader plates and can offer advice on indicated expected loads on request.

For further information:

T: +44 (0)3300 94 94 11

E: sales@mydek.com

www.mydek.com

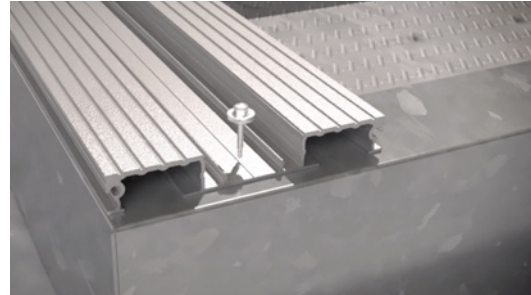


B Delta Deck Board installation

Delta Decking Board Install

1. Position the board in the correct location and fix into position using the **MyDek** self-drilling screws and washers provided.

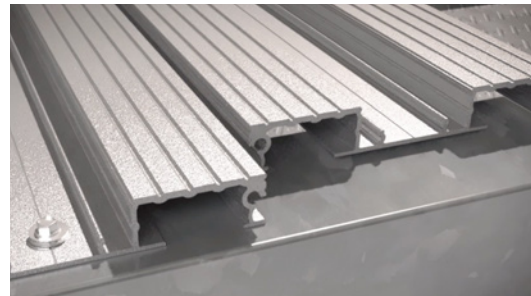
Supports should be spaced at maximum 600mm for **Delta20** and 1000mm for **Delta30**.



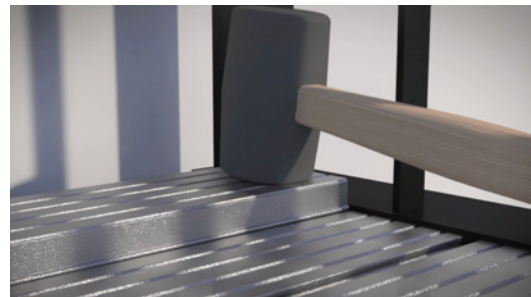
NOTE: Where boards are being fixed to a rigid substrate (for example a steel balcony) allowance must be made for thermal expansion by predrilling an 8mm hole in the base of the board at each fixing position, and leaving a min 3mm gap between board ends on runs in excess of 12 metres.

2. Position the next board leaving a gap of 6mm (tip: using 6mm spacing packers makes this job quick and easy).

Repeat until the area is decked completely.



3. Once all boards are fixed, tap the capping channel into position using a rubber mallet.



IMPORTANT!

Once decking is installed, carefully clean the deck surface with a clean soft brush and if necessary a damp cloth to remove all swarf and dirt. Cover the deck completely with a protective layer e.g. correx board to protect from being scratched or damaged if further works are taking place around the balcony or terrace area prior to normal use. Only remove the protective layer once all construction work is complete and the decking is ready for normal use.



For further information:

T: +44 (0)3300 94 94 11

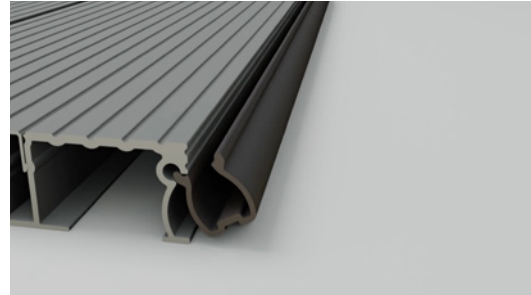
E: sales@mydek.com

www.mydek.com

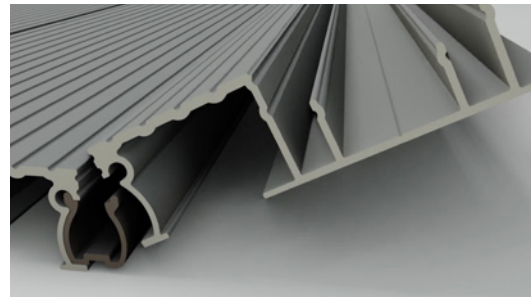
B Delta Deck Board installation

Drainage Channel installation (Delta30 only)

1. Align and insert the drainage channel section as shown and push it firmly into position so that it nests completely against with the deck board profile.

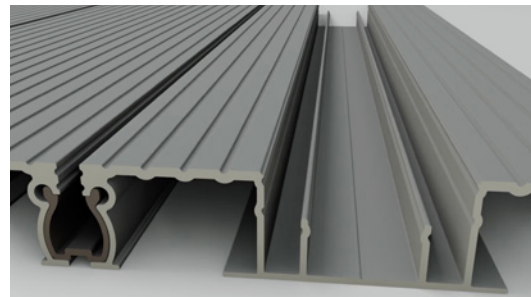


2. Take the next deck board and clip into the top edge of the drainage channel extrusion.



3. Push the deck down to the horizontal position ensuring that the two profile nest neatly as shown.

Note: Where lengths of channel need to be jointed, these should ideally be positioned where dripping does not cause a nuisance. A waterproof seal may be possible using a proprietary sealant. Ensure a continuous bead between the two parts and remove any excess when pressed together to ensure a neat joint.



For further information:

T: +44 (0)3300 94 94 11

E: sales@mydek.com

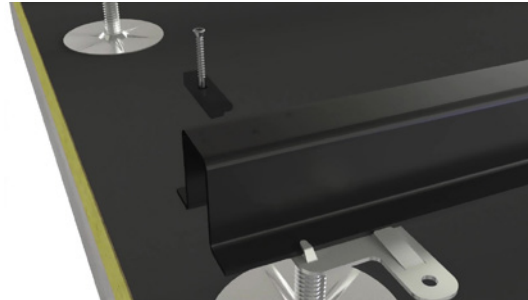
www.mydek.com



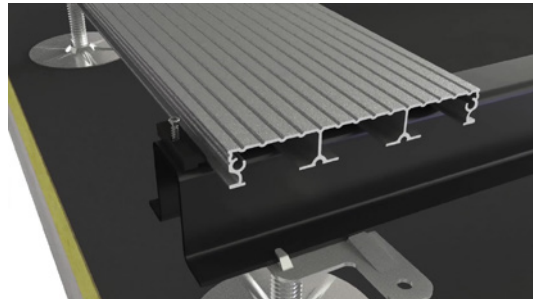
C Vista/Innova Deck Board installation

Decking Board Install onto pedestals

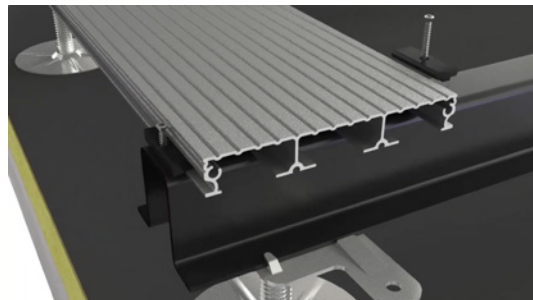
1. Fix a **Basic Clips** to the starting ends of the rails using the self drilling screws provided. T15 long shank driver bit required. Insert screws about half way only.



2. Insert the first board into the clips and check that all the **SupportRails™** are correctly aligned. Tighten the screws completely. Check levels and adjust pedestals accordingly if required.



3. Place the **Basic Clips** up to the edge of the board. Insert a fixing screw about half-way.



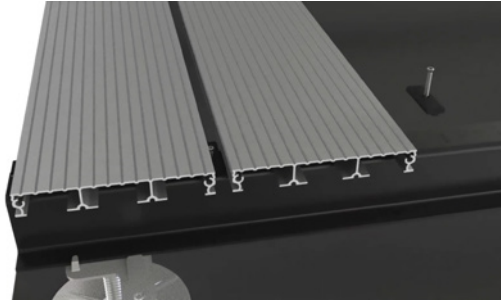
For further information:

T: +44 (0)3300 94 94 11

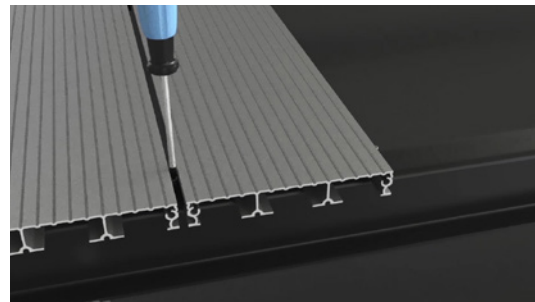
E: sales@mydek.com

www.mydek.com

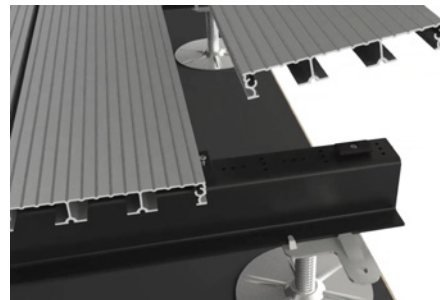
- 5.** Lay the second board up to the row of clips and place the next row of clips up to the edge of the board and insert screws half-way.



- 6.** Tighten the previous row of fixings to fully secure the first board



- 7.** Place the next board up to the row of loose fixings, followed by the next set of clips and screws as in step 5. Repeat until all boards have been laid.



- 9.** Cut the last board to fit (to edge of balcony or into doorways as necessary) using appropriate metal-cutting blades in suitable power tools.



For further information:

T: +44 (0)3300 94 94 11

E: sales@mydek.com

www.mydek.com





For further information:

T: +44 (0)3300 94 94 11

E: sales@mydek.com

www.mydek.com

D FAQ's

- 1. Q. What are the maximum spans between the different boards?**
A. Delta20, Vista & Innova recommended span is 600mm. Delta30 is 1000mm
- 2. Q. What is the maximum overhang from the last joist to the end of the board?**
A. Delta20, Vista & Innova recommended overhang is max. 150mm. Delta30 is 250mm.
- 3. Q. What is the minimum construction depth of the sub-rail system.**
A. Standard system is 65mm plus the depth of the board.
- 4. Q. What is the maximum depth that can be achieved.**
A. Using the Premium subrail system depths of up to 400mm can be achieved.
- 5. Q. What is the maximum recommended joist overhang from a pedestal to the end of the joist.**
A. Maximum recommended overhang is 250mm.
- 6. Q. How do we remove any burrs caused by cutting?**
A. Carefully remove any burrs using a flat file or medium grade abrasive paper.
- 7. Q. How do we repair minor scratches?**
A. Using typical car body panel repair techniques, gently abrade the surface around the scratch using a fine grade abrasive paper remove any dust and contamination using a degreasing wipe. Spray the affected area using a acrylic spray paint at 30% gloss (sometimes called satin) finish.

For further information:

T: +44 (0)3300 94 94 11

E: sales@mydek.com

www.mydek.com



E Care & maintenance

Congratulations! You are lucky enough to have a **Mydek** Non-Combustible Decking System!

Your decking is made from aluminium and has been produced and tested to the highest standards of the industry. With simple and regular care will last many years to come. Aluminium will never burn, rot, rust or warp so you can relax in the knowledge that you are safe and sound.

Here's a few simple do's and don'ts to ensure your decking remains in optimum condition.



Do:



Keep your deck free of dirt and debris by regular sweeping (at least every 2 weeks) with a soft brush.



Try to lift furniture or planters rather than drag them across the deck surface.



Wash your deck down regularly with clean water and a mild detergent if required. We recommend a minimum of 2 times a year. Clean, wet surfaces can be allowed to air dry or can be wiped clean with a soft cloth.



Check your decking carefully once a year to ensure no fixings are working loose, and simply tighten them using the appropriate driver bit if necessary.



Use furniture with rubber or plastic feet to prevent unnecessary scratching of the decking surface.



Use your balcony and deck safely and enjoy!



For further information:

T: +44 (0)3300 94 94 11

E: sales@mydek.com

www.mydek.com



Don't:



Use sharp or abrasive materials to clean your deck (e.g. wire wool, abrasive papers or scrubbing tools). This may cause scratching of the coating which will affect the appearance.



Use furniture with metal feet which can scratch the decking if dragged across the surface.



Use abrasive salt grit for de-icing purposes. Instead, use easily soluble salt.



Use oil/wax sealants, coatings, or polishes on the decking as this may cause the surface to become slippery, especially when wet.



Use aggressive acid or alkaline chemical to clean your deck.



If:

Your decking becomes damaged or scratched, [Contact Us](#) to ask for advice or to purchase a repair kit. Damaged deck boards may be removed and replaced if necessary but always check with your building manager or landlord if you live in a multi-occupancy apartment block. Mydek accepts no responsibility for the unsafe removal of deck boards from balcony environments.

For further information:

T: +44 (0)3300 94 94 11

E: sales@mydek.com

www.mydek.com



About MyDek®?

The **MyDek** team harnesses a huge range of experience, creativity, passion and drive to make balconies and terraces safe places to be. Drawn from different areas of the construction industry our team brings together extensive knowledge of specification, technical compliance and outstanding innovation to create a non-combustible decking system that delivers on our mantra of Safe. Smart. Sustainable. **So relax, you're in safe hands.**

Safe. Smart. Sustainable.

Our ethos runs through everything we do. We're passionate to ensure that our products reflect these values and make a significant contribution to residential balconies and terraces as safe and enjoyable places.

Quite simply, you're going to love this.

The philosophy that supports all our products



Safe.

- Class A2-s1,d0 fire rated non-combustible aluminium
- Non-slip surface coating gives PTV rating of 59
- Durable alloy won't rust or rot
- 30 year warranty



Smart.

- Attractive board design in range of colours
- Lightweight material reduces structural loads on buildings
- Fast fit system saves time and money on installation



Sustainable.

- Made from recycled aluminium and is 100% recyclable.
- Low maintenance material gives 60 year service life
- Ready availability and easily recycled ensuring a low whole-life cost.

MYDEK®
Non-combustible decking systems

For further information:

T: +44 (0)3300 94 94 11

E: sales@mydek.com

www.mydek.com