

Luxura[®]
Mineral Composite Decking System

Installation Guide

- A** Substructure Installation
- B** Luxura Mineral Composite Deck Boards Installation

Contents

Introduction

Tools and Equipment3

Health and Safety Equipment..... 4

A Substructure Installation

BoxRail and Cleat Substructure System.....5

Premium SupportRail and Pedestal System 8

B Luxura Board Installation

Mineral Composite Board Install10

C FAQ's

.....14

D Care and Maintenance

.....15



For further information:
T: +44 (0)3300 94 94 11
E: sales@mydek.com
www.mydek.com

Introduction

Welcome to your MyDek installation guide. This guide has been produced to facilitate successful installation of your deck system.

As with any successful project, having the right tools for the job is an essential part of success and we've listed some recommendations below:

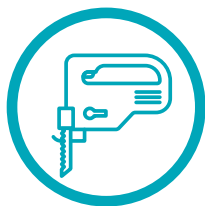
Tools and Equipment List



**Circular Saw/
Chop Saw**

Blade specification

- PCD (polycrystalline diamond) for mineral composite
- Aluminium or multi-material blade for aluminium



Jigsaw

Blade specification

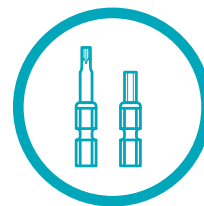
- Tungsten Carbide for mineral composite
- Multi-material blade for aluminium



Cordless drill

Drill bit specification

- Tungsten carbide with tile point tip drill bit for mineral composite
- Metal cutting or multi material for aluminium

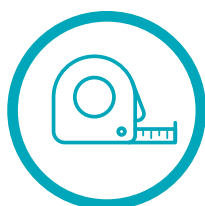


Driver bits:

- Long shank T15 Torx bit for mineral composite board fixings
- 8mm Hex driver for BoxRail system



Pencil



**Tape
measure**



**Spirit level/
Laser level**



**Vaccuum
cleaner**

for dust extraction

For further information:

T: +44 (0)3300 94 94 11

E: sales@mydek.com

www.mydek.com



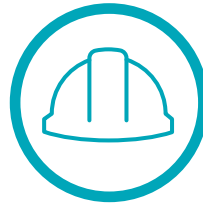
Minimum Health and Safety Equipment



**Goggles or
safety glasses**



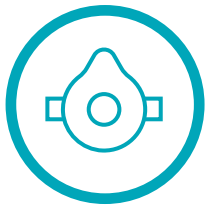
Gloves



Hard Hat



Safety boots



Dust Mask

Important!

Cutting mineral fibre composite can create dust. Always wear a suitable dust mask and use dust extraction equipment.

Special Tip! Always run the saw or drill at a slower speed to avoid generating excess heat. this increases the longevity of the blade and cutting efficiency.



For further information:

T: +44 (0)3300 94 94 11

E: sales@mydek.com

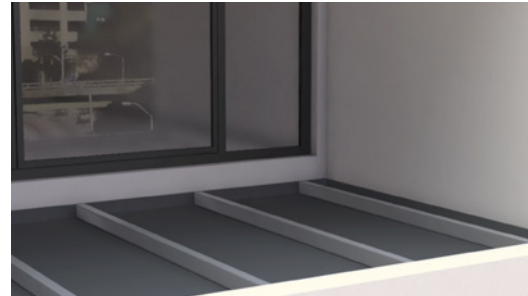
www.mydek.com

A Substructure Installation

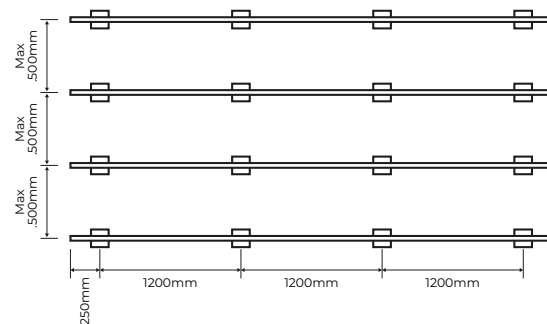
BoxRail™ and Cleat Substructure System

1. Plan and set out the balcony area with **BoxRail™** joists placed loosely at the correct spacings to accept the decking.

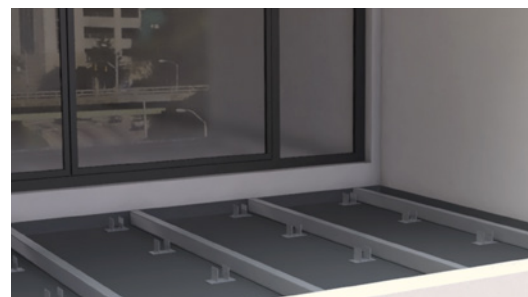
Ensure that there are joists close to the ends of the decking boards to provide support (preferably not more than 150mm cantilever at the end of board)



60 x 40mm **Boxrail™** or 50mm **Support Rail** – rails should be spaced at maximum 500mm apart with cleats at maximum 1200mm apart along the rail. Max overhang of joist beyond pedestal or cleat 150mm.



2. Set out a cleat foot at each point required using appropriate spacings along the length of the **Boxrail™**, usually 1200 - 1500 mm (refer to technical data sheets if unsure)



For further information:

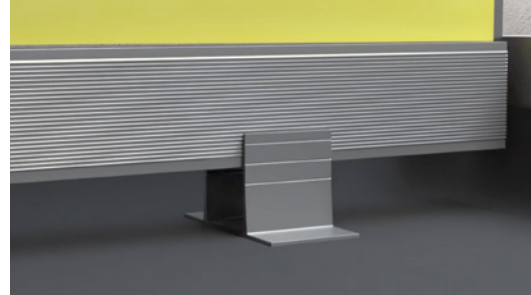
T: +44 (0)3300 94 94 11

E: sales@mydek.com

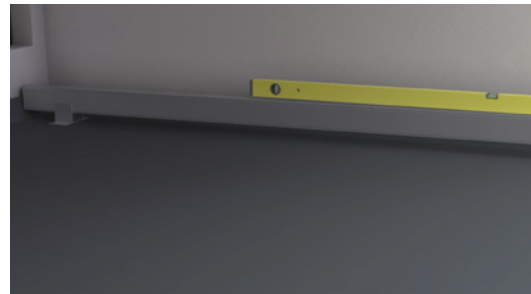
www.mydek.com



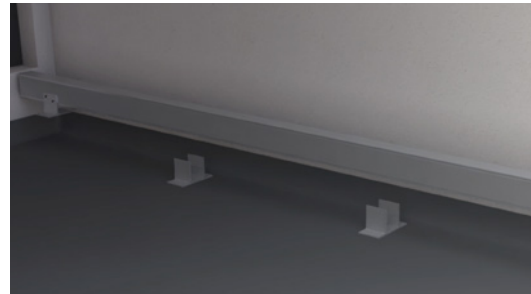
- 3.** Clip the first cleat foot onto one end of the **BoxRail™** and adjust to approximately the right height.



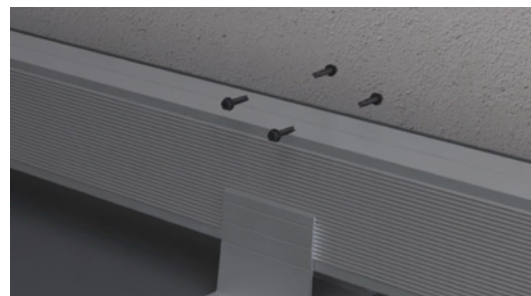
- 4.** Repeat at the other end. Place the **BoxRail™** carefully into position at one edge of the balcony and check level. Adjust the **BoxRail™** in the feet till a level position is achieved.



- 5.** Fit additional feet at approximate spacings in between the first and last foot, and adjust for height.

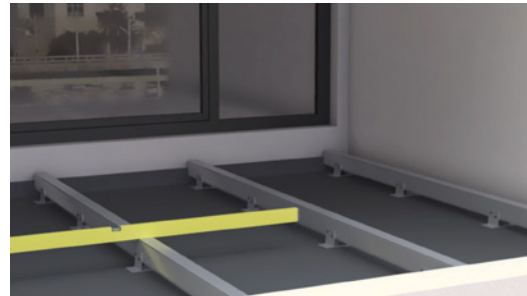


- 6** Using the groove as a positioning guide position 2 screws approx. 30mm apart to each side using the self drilling screws provided and fix through each cleat foot into the **BoxRail™**.



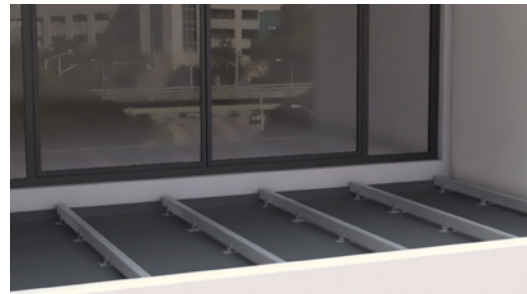
For further information:
T: +44 (0)3300 94 94 11
E: sales@mydek.com
www.mydek.com

- 7.** Repeat steps 3-5 on the other joists positions, levelling each joist with the previous one to maintain a level structure for the decking.



- 8.** Install decking as per Decking Installation Guide, later in this manual.

NOTE: Max overhang of board beyond joist: 150mm



IMPORTANT NOTE!

MyDek decking systems are lightweight, however any live and permanent loads will be transferred through the pedestals/supports and can impose significant point loads. Consideration should be given to the terrace surface to ensure;

- i. The structure is sufficiently strong and robust to accept the expected loads without undue deflection
- ii. Any waterproofing membrane will not be damaged by the proposed point loads throughout its design life. (please consult manufacturers guidance)
- iii. The surface is smooth enough to ensure full contact between baseplate and surface.

Should there be any concerns, consideration should be given to either providing spreader plates under the supports, or reducing the support centres. **MyDek** offer a range of spreader plates and can offer advice on indicated expected loads on request.

For further information:

T: +44 (0)3300 94 94 11

E: sales@mydek.com

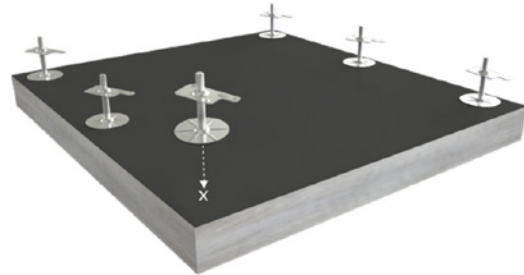
www.mydek.com



A Substructure Installation

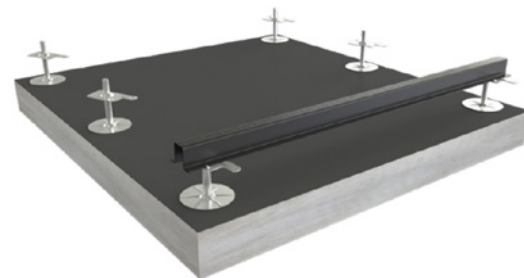
Premium SupportRail and Pedestal System

1. Set out **Pedestals** across the area as a maximum spacing of 600mm centres for the rails and pedestals at a maximum of 1200mm along the rails.



Pedestal Centres	Along Decking	Along SupportRail™
55 SupportRail™	500mm	1200mm

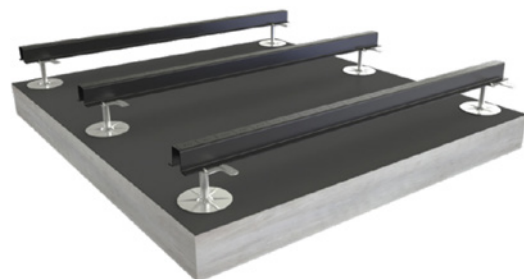
2. Lay the first **SupportRail™** onto the first row of **Pedestals** (cut to length if required), aligned with the starting line, and lock each Pedestal onto the **SupportRail™**, ensuring that every **SupportRail™** has a **Pedestal** at each end.



Maximum recommended overhang of **SupportRail™** beyond the pedestal is 200mm

3. Complete the first run of **SupportRail™** with as many lengths as necessary, cutting the last length to suit.

Note: Pedestals will need to be positioned to support at any joints between the rail.



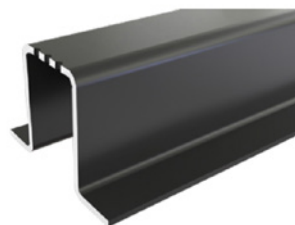
For further information:

T: +44 (0)3300 94 94 11

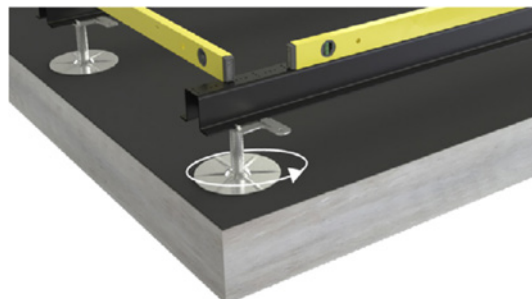
E: sales@mydek.com

www.mydek.com

- 4.** Start the next run of **SupportRail™** as per step 2. Ensuring that the run starts with a full board-module and is aligned to the starting line. The **SupportRail™** can be cut to length, and the offcut used as long as the cut end is trimmed to a full board-module.



- 5.** Adjust the pedestals as necessary to level the **SupportRails™**.



IMPORTANT NOTE!

Any live and permanent loads will be transferred through the pedestals/supports and can impose significant point loads. Consideration should be given to the terrace surface to ensure;

- i. The structure is sufficiently strong and robust to accept the expected loads without undue deflection
- ii. Any waterproofing membrane will not be damaged by the proposed point loads throughout its design live. (please consult manufacturers guidance)
- iii. The surface is smooth enough to ensure full contact between baseplate and surface.

Should there be any concerns, consideration should be given to either providing spreader plates under the supports, or reducing the support centres. **MyDek** offer a range of spreader plates and can offer advice on indicated expected loads on request.

For further information:

T: +44 (0)3300 94 94 11

E: sales@mydek.com

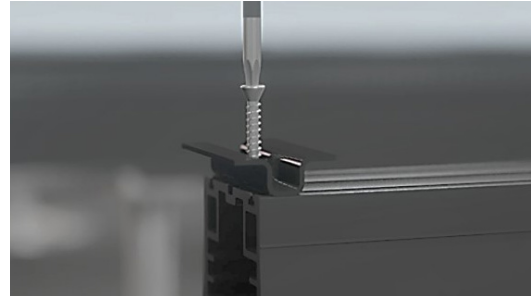
www.mydek.com



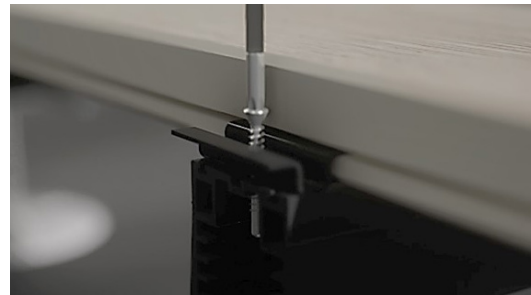
B Luxura Board installation

Mineral Composite Board Install

1. Fix a Basic Clips to the starting ends of the rails using the self-drilling screws provided. T15 long shank driver bit required. Insert screws about halfway only.



2. Insert the first board into the clips and check that all the sub-rails are correctly aligned. Tighten the screws completely. Check levels and adjust supports accordingly if required.



3. Insert the next row of fixing clips into the board and tighten screws to approximately halfway.



For further information:

T: +44 (0)3300 94 94 11

E: sales@mydek.com

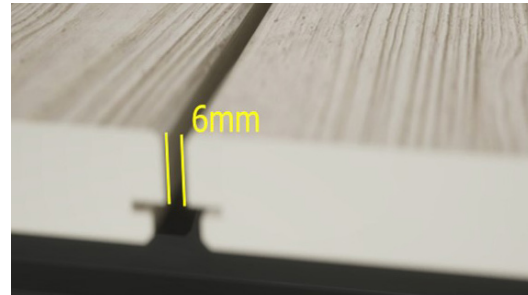
www.mydek.com

B Luxura Board installation

Mineral Composite Board Install

- 4.** Lay the second board up to the row of clips, allowing a maximum 6mm gap between the boards for drainage. Fully tighten the screws. Repeat the process until all the boards have been laid

TIP! To ensure accurate and consistent spacing, insert 6mm plastic packers and remove once screws are tightened.



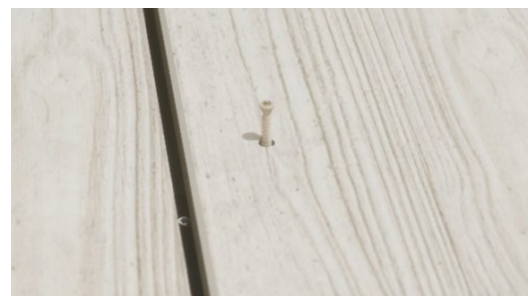
- 5.** To fix the last board, position the board against the last clip and tighten the screw. Then, using the correct 3.5mm drill bit, pre-drill a pilot hole through the deck board to the aluminium sub rail.

TIP! Ensure to use a tungsten carbide drill bit for maximum longevity and keep drill at a medium speed. This prevents overheating and maximises the cutting efficiency of the drill bit. Drilling high speed increases friction heat and reduces cutting efficiency.



- 6.** Insert the self-drilling, colour matched screw and tighten completely.

TIP! Tighten the last bit of the screw carefully to avoid damaging the surface of the board.



For further information:

T: +44 (0)3300 94 94 11

E: sales@mydek.com

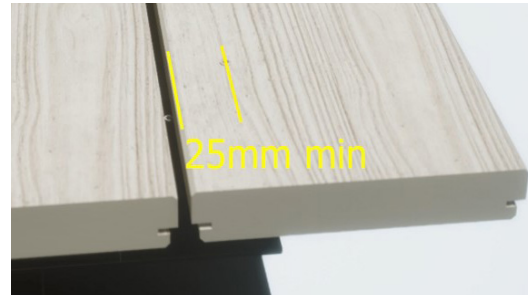
www.mydek.com



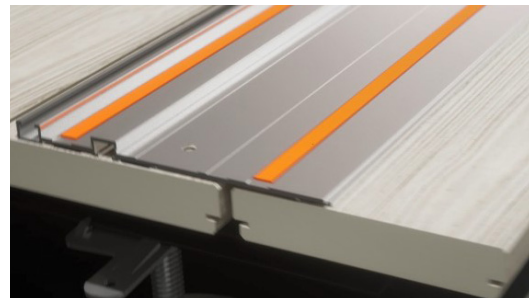
B Luxura Board installation

Mineral Composite Board Install

- 7.** The screw should be positioned no closer than 25mm from any edge of the board

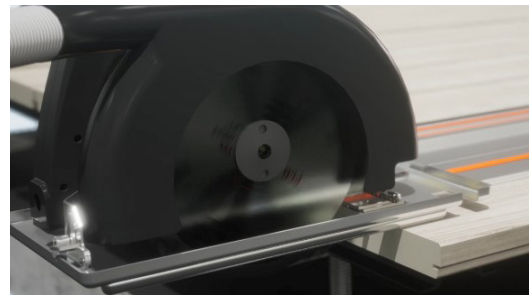


- 8.** To trim the boards down to the correct width use a straight edge (preferably a proprietary rail saw) and clamp into position at the required point



- 9.** Using a circular saw, cut along the straight edge to remove the unwanted material. Apply dust extraction vacuum to saw.

TIP! Always cut boards using a PCD (polycrystalline diamond) blade for maximum blade durability. The mineral composite is a very hard material and normal timber-cutting, or multi-material blades will quickly become blunt and overheat. Cut gently and don't force the blade when cutting.



For further information:

T: +44 (0)3300 94 94 11

E: sales@mydek.com

www.mydek.com

Enjoy your
finished deck



C FAQ's

- 1. Q: What is the maximum spacings allowed between the substructure rails?**
A: 500mm centres between the rails. This allows for the safe domestic loading of 2kN (approx. 200kgs) point load in the centre of the board.
- 2. Q: What is the maximum overhang from the last substructure rail to the end of the board.**
A: Maximum overhang is 150mm
- 3. Q: What is the minimum construction depth of the substructure rail system?**
A: Standard system is 70mm. Box rail and cleat system can achieve a minimum of 35mm. (see technical data sheets for further information).
- 4. Q: What is the maximum depth that can be achieved.**
A: Using the Premium subrail system depths of up to 400mm can be achieved.
- 5. Q: What is the maximum recommended joist overhang from a pedestal to the end of the joist.**
A: Maximum recommended overhang is 250mm.
- 6. A: How are minor damages or scratches to the boards repaired.**
Q: Minor scratches can be removed using by lightly sanding the surface with abrasive paper and then apply a coating of LuxuraSeal with a soft lint-free cloth. Chips or heavy surface damage may require boards to be replaced or the damaged section cut off the board length.
- 7. Q: Do cut edges need to be sealed or treated in any way?**
A: No, the high-density composite does not need to have any cut edges sealed or treated.
- 8. Q: Do we need to allow any gaps between boards when abutting them end to end to allow for expansion and contraction?**
A: No. Boards can be directly abutted. Luxura Mineral Composite decking is an inert material and does not expand and contract with temperature changes.



For further information:

T: +44 (0)3300 94 94 11

E: sales@mydek.com

www.mydek.com

D Care & maintenance

Congratulations! You are lucky enough to have a **Mydek Luxura®** Non-Combustible Decking System!

Your decking is made from a unique mineral composite and has been produced and tested to the highest standards of the industry. This mineral composite will never burn, rot, rust or warp. With simple and regular care so you can relax in the knowledge that your deck is safe and sound for many years to come.

Here's a few simple do's and don'ts to ensure your decking remains in optimum condition.



Do:



Keep your deck free of dirt and debris by regular sweeping (at least every 2 weeks) with a soft brush.



Try to lift furniture or planters rather than drag them across the deck surface.



Wash your deck down regularly with clean water and a mild detergent if required. We recommend a minimum of 2 times a year. Clean, wet surfaces can be allowed to air dry or can be wiped clean with a soft cloth.



Check your decking carefully once a year to ensure no fixings are working loose, and simply tighten them using the appropriate driver bit if necessary.



Use furniture with rubber or plastic feet to prevent unnecessary scratching of the decking surface.



Use your balcony and deck safely and enjoy!

For further information:

T: +44 (0)3300 94 94 11

E: sales@mydek.com

www.mydek.com





Don't:



Use sharp or abrasive materials to clean your deck (e.g. wire wool, abrasive papers or scrubbing tools). This may cause scratching of the coating which will affect the appearance.



Use furniture with metal feet which can scratch the decking if dragged across the surface.



Use abrasive salt grit for de-icing purposes. Instead, use easily soluble salt.



Use oil/wax sealants, coatings, or polishes on the decking as this may cause the surface to become slippery, especially when wet.



Use aggressive acid or alkaline chemical to clean your deck.



If:

Scratches or other surface damage: if your decking becomes damaged or scratched, minor scratches or damage may be removed using a medium grit abrasive paper. Damaged deck boards may be removed and replaced if necessary but always check with your building manager or landlord if you live in a multi-occupancy apartment block. MyDek accepts no responsibility for the unsafe removal of deck boards from balcony environments. If in any doubt please Contact Us to ask for advice.

Loses its stain resistance: Your Luxura decking is impregnated with a waterbased sealant solution which should last for many years. Whilst not essential, we recommend applying a coat of LuxuraSeal solution every three years or as desired to maintain the deck in optimum condition. This waterbased impregnation is fast, simple to apply and easy to apply. Contact us for advice or help on sourcing LuxuraSeal.



For further information:

T: +44 (0)3300 94 94 11

E: sales@mydek.com

www.mydek.com



About MyDek®?

The **MyDek** team harnesses a huge range of experience, creativity, passion and drive to make balconies and terraces safe places to be. Drawn from different areas of the construction industry our team brings together extensive knowledge of specification, technical compliance and outstanding innovation to create a non-combustible decking system that delivers on our mantra of Safe. Smart. Sustainable. **So relax, you're in safe hands.**

Safe. Smart. Sustainable.

Our ethos runs through everything we do. We're passionate to ensure that our products reflect these values and make a significant contribution to residential balconies and terraces as safe and enjoyable places.

Quite simply, you're going to love this.

The philosophy that supports all our products



Safe.

- Class A2-s1,d0 fire rated non-combustible aluminium
- Non-slip surface coating gives PTV rating of 59
- Durable alloy won't rust or rot
- 30 year warranty



Smart.

- Attractive board design in range of colours
- Lightweight material reduces structural loads on buildings
- Fast fit system saves time and money on installation



Sustainable.

- Made from recycled aluminium and is 100% recyclable.
- Low maintenance material gives 60 year service life
- Ready availability and easily recycled ensuring a low whole-life cost.

MYDEK®
Non-combustible decking systems

For further information:

T: +44 (0)3300 94 94 11

E: sales@mydek.com

www.mydek.com