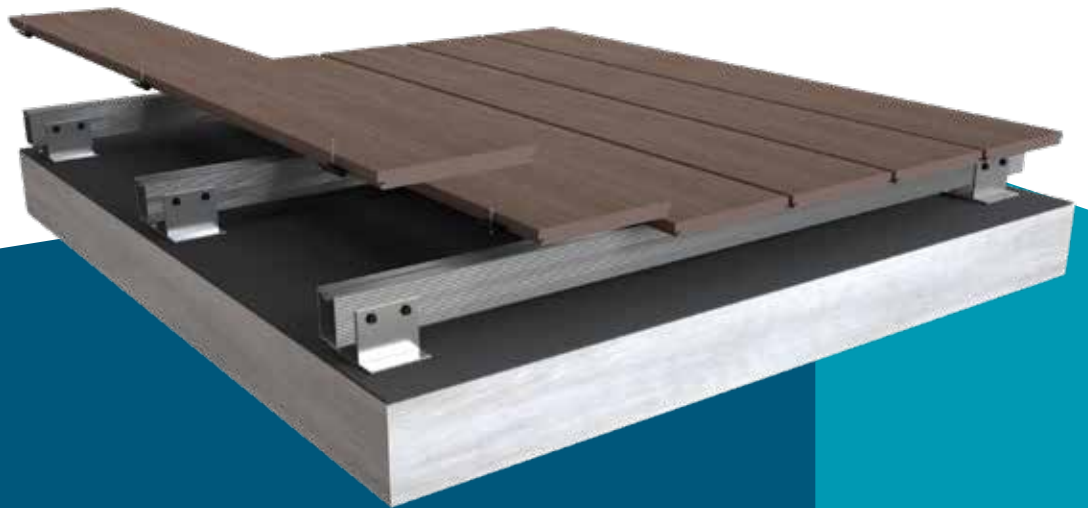




Luxura[®] Deck 200

Mineral Composite Decking System

Installation Guide



- A** Substructure Installation
- B** Luxura Mineral Composite Deck Boards Installation
- C** FAQ's
- D** Care and Maintenance

Contents

| | |
|--------------------------------------------|----|
| Introduction | |
| Tools and Equipment | 3 |
| Storage and Handling..... | 4 |
| Health and Safety Equipment..... | 4 |
| A Substructure Installation | |
| BoxRail and Cleat Substructure System..... | 5 |
| B Luxura Board Installation | |
| Mineral Composite Board Install | 8 |
| C FAQ's | |
| | 12 |
| D Care and Maintenance | |
| | 13 |



For further information:
T: +44 (0)3300 94 94 11
E: sales@mydek.com
www.mydek.com

Introduction

Welcome to your MyDek installation guide. This guide has been produced to facilitate successful installation of your deck system.

As with any successful project, having the right tools for the job is an essential part of success and we've listed some recommendations below:

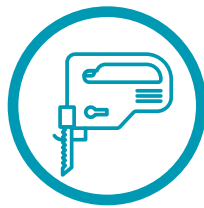
Tools and Equipment List



**Circular Saw/
Chop Saw**

Blade specification

- PCD (polycrystalline diamond) for mineral composite
- Aluminium or multi-material blade for aluminium



Jigsaw

Blade specification

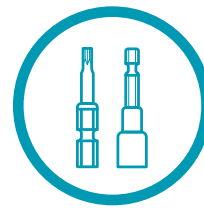
- Tungsten Carbide for mineral composite
- Multi-material blade for aluminium



Cordless drill

Drill bit specification

- Tungsten carbide with tile point tip drill bit for mineral composite
- Metal cutting or multi material for aluminium

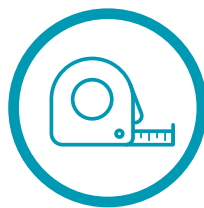


Driver bits:

- Long shank T15 Torx bit for mineral composite board fixings
- 8mm Hex driver for BoxRail system



Pencil



**Tape
measure**



**Spirit level/
Laser level**



**Vacuum
cleaner**

- dust extraction system with m-class filter



Warning - do not use an impact driver, as they can exert excessive forces on the fixings, causing them to fail.



Screws should be tightened to a maximum torque of 2Nm.

For further information:

T: +44 (0)3300 94 94 11

E: sales@mydek.com

www.mydek.com



Storage and handling

All storage, logistics and installation must be conducted under an appropriate risk assessment and method statement.

- Always wear gloves when handling boards.
- Boards must be stored flat, supported along their entire length such as on a suitable pallet.
- Store in a dry, ventilated area
- Do not store boards in damp or exterior conditions, this can cause mould build-up between the boards.
- Do not overload pallets, failure of a pallet can cause the stack to topple. Instead, stack up to 2 metres high in total and within the capacity of the pallet.
- Do not drag boards off the stack, instead, avoid scratches by lifting boards using a suitable technique, and where possible using suitable lifting aids.
- Use lifting aids and Personal Protective Equipment as set out in the risk assessment and method statement.

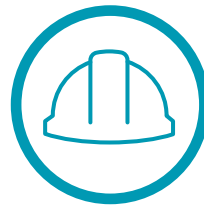
Minimum Health and Safety Equipment



Goggles or safety glasses



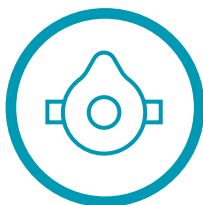
Gloves



Hard Hat



Safety boots



Dust Mask

- (FPP3 Grade)

Important Note:

Like many masonry building products, Luxura contains silicates which can cause respiratory disease if excessively inhaled. It is important that appropriate dust masks and eye protection are worn and dust extraction is used when cutting.

Special Tip! Always run the saw or drill at a slower speed to avoid generating excess heat. This increases the longevity of the blade and cutting efficiency.



For further information:

T: +44 (0)3300 94 94 11

E: sales@mydek.com

www.mydek.com

A Substructure Installation

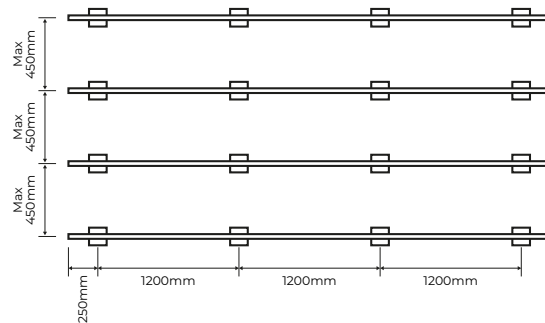
BoxRail™ and Cleat Substructure System

1. Plan and set out the balcony area with **BoxRail™** joists placed loosely at the correct spacings to accept the decking.

Ensure that there are joists close to the ends of the decking boards to provide support (preferably not more than 100mm cantilever at the end of board).

60 x 40mm **Boxrail™** rails should be spaced at maximum 450mm apart with cleats at maximum 1500mm apart along the rail. Max overhand of joist beyond pedestal or cleat 300mm.

Spacings for other rails as per table below when used for standard domestic loadings. Other spacings apply for commercial or crowd-loaded areas, check with MyDek Technical Department.



2. Set out a cleat foot at each point required using appropriate spacings along the length of the **BoxRail™**, as outlined in table opposite.

| Rail Type | Max Spacing | Max Cantilever |
|-----------|-------------|----------------|
| 32 x 40mm | 1000mm | 190mm |
| 60 x 40mm | 1500mm | 300mm |
| 90 x 40mm | 2000mm | 500mm |

Note, for short spans, avoid excessive overhangs. Keep overhangs to a minimum where possible.

Caution! When installing cleats on waterproofing membranes, MyDek recommends installing rubber protection mats under each cleat. Consider carefully whether additional metal spreader plates may be required. MyDek cannot be held responsible for any damage to waterproofing caused by insufficient protection.

For further information:

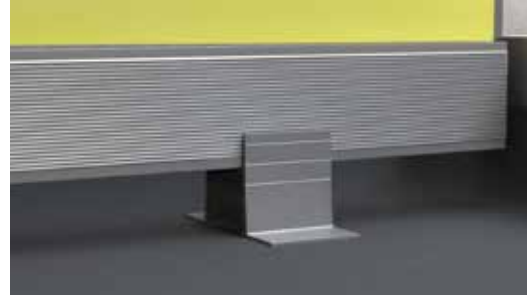
T: +44 (0)3300 94 94 11

E: sales@mydek.com

www.mydek.com



- 3.** Clip the first cleat foot onto one end of the **BoxRail™** and adjust to approximately the right height.



- 4.** Repeat at the other end. Place the **BoxRail™** carefully into position at one edge of the balcony and check level. Adjust the **BoxRail™** in the feet till a level position is achieved.



- 5.** Fit additional feet at approximate spacings in between the first and last foot, and adjust for height.



- 6** Using the groove as a positioning guide position 2 screws evenly apart to each side using the self drilling screws provided and fix through each cleat foot into the **BoxRail™**.



Warning - do not use an impact driver, as they can exert excessive forces on the fixings, causing them to fail.



Screws should be tightened to a maximum torque of 2Nm.



For further information:

T: +44 (0)3300 94 94 11

E: sales@mydek.com

www.mydek.com

- 7.** Repeat steps 3-5 on the other joists positions, levelling each joist with the previous one to maintain a level structure for the decking.



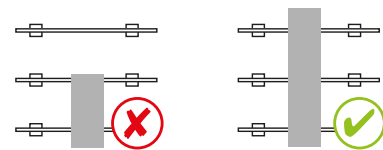
- 8.** Install decking as per Decking Installation Guide, later in this manual.

NOTE: Max overhang of board beyond joist: 100mm



IMPORTANT NOTES

Boards must be installed over a minimum of two continuous spans. Do not install a single span unless centres are reduced, contact MyDek for advice if needed.



MyDek decking systems are lightweight, however any live and permanent loads will be transferred through the pedestals/supports and can impose significant point loads. Consideration should be given to the terrace surface to ensure;

- i. The structure is sufficiently strong and robust to accept the expected loads without undue deflection
- ii. Any waterproofing membrane will not be damaged by the proposed point loads throughout its design live. (please consult manufacturers guidance)
- iii. The surface is smooth enough to ensure full contact between baseplate and surface.

Should there be any concerns, consideration should be given to either providing spreader plates under the supports, or reducing the support centres. **MyDek** offer a range of spreader plates and can offer advice on indicated expected loads on request.

For further information:

T: +44 (0)3300 94 94 11

E: sales@mydek.com

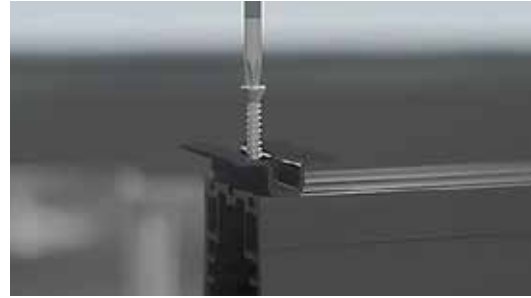
www.mydek.com



B Luxura Board installation

Mineral Composite Board Install

1. Fix a basic clip to the starting ends of the rails using the self-drilling screws provided. T15 long shank driver bit required. Insert screws about halfway only.



2. Insert the first board into the clips and check that all the sub-rails are correctly aligned. Tighten the screws completely. Check levels and adjust supports accordingly if required.



3. Insert the next row of fixing clips into the board and tighten screws to approximately halfway.



Warning - do not use an impact driver, as they can exert excessive forces on the fixings, causing them to fail.



Screws should be tightened to a maximum torque of 2Nm.



For further information:

T: +44 (0)3300 94 94 11

E: sales@mydek.com

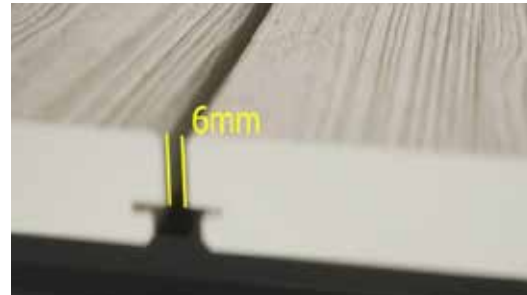
www.mydek.com

B Luxura Board installation

Mineral Composite Board Install

- 4.** Lay the second board up to the row of clips, allowing a maximum 6mm gap between the boards for drainage. Fully tighten the screws. Repeat the process until all the boards have been laid

TIP! To ensure accurate and consistent spacing, insert 6mm plastic packers and remove once screws are tightened.



- 5.** To fix the last board, position the board against the last clip and tighten the screw. Then, using the correct 3.5mm drill bit, pre-drill a pilot hole through the deck board to the aluminium sub rail.

TIP! Ensure to use a tungsten carbide drill bit for maximum longevity and keep drill at a medium speed. This prevents overheating and maximises the cutting efficiency of the drill bit. Drilling high speed increases friction heat and reduces cutting efficiency.



- 6.** Insert the self-drilling, colour matched screw and tighten completely.

TIP! Tighten the last bit of the screw carefully to avoid damaging the surface of the board.



Warning - do not use an impact driver, as they can exert excessive forces on the fixings, causing them to fail.



Screws should be tightened to a maximum torque of 2Nm.

For further information:

T: +44 (0)3300 94 94 11

E: sales@mydek.com

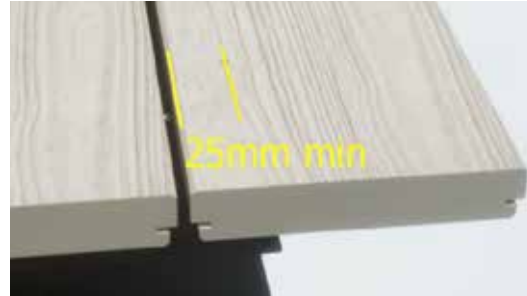
www.mydek.com



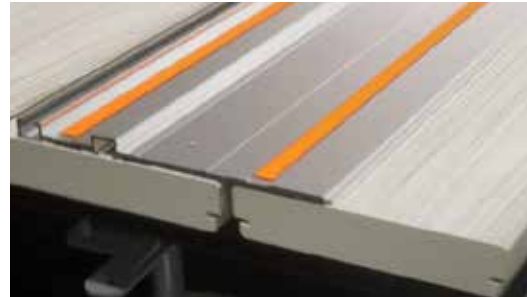
B Luxura Board installation

Mineral Composite Board Install

- 7.** The screw should be positioned no closer than 25mm from any edge of the board

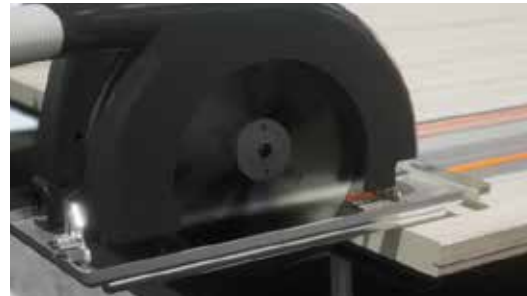


- 8.** To trim the boards down to the correct width use a straight edge (preferably a proprietary rail saw) and clamp into position at the required point



- 9.** Using a circular saw, cut along the straight edge to remove the unwanted material. Apply dust extraction vacuum to saw.

TIP! Always cut boards using a PCD (polycrystalline diamond) blade for maximum blade durability. The mineral composite is a very hard material and normal timber-cutting, or multi-material blades will quickly become blunt and overheat. Cut gently and don't force the blade when cutting.



For further information:

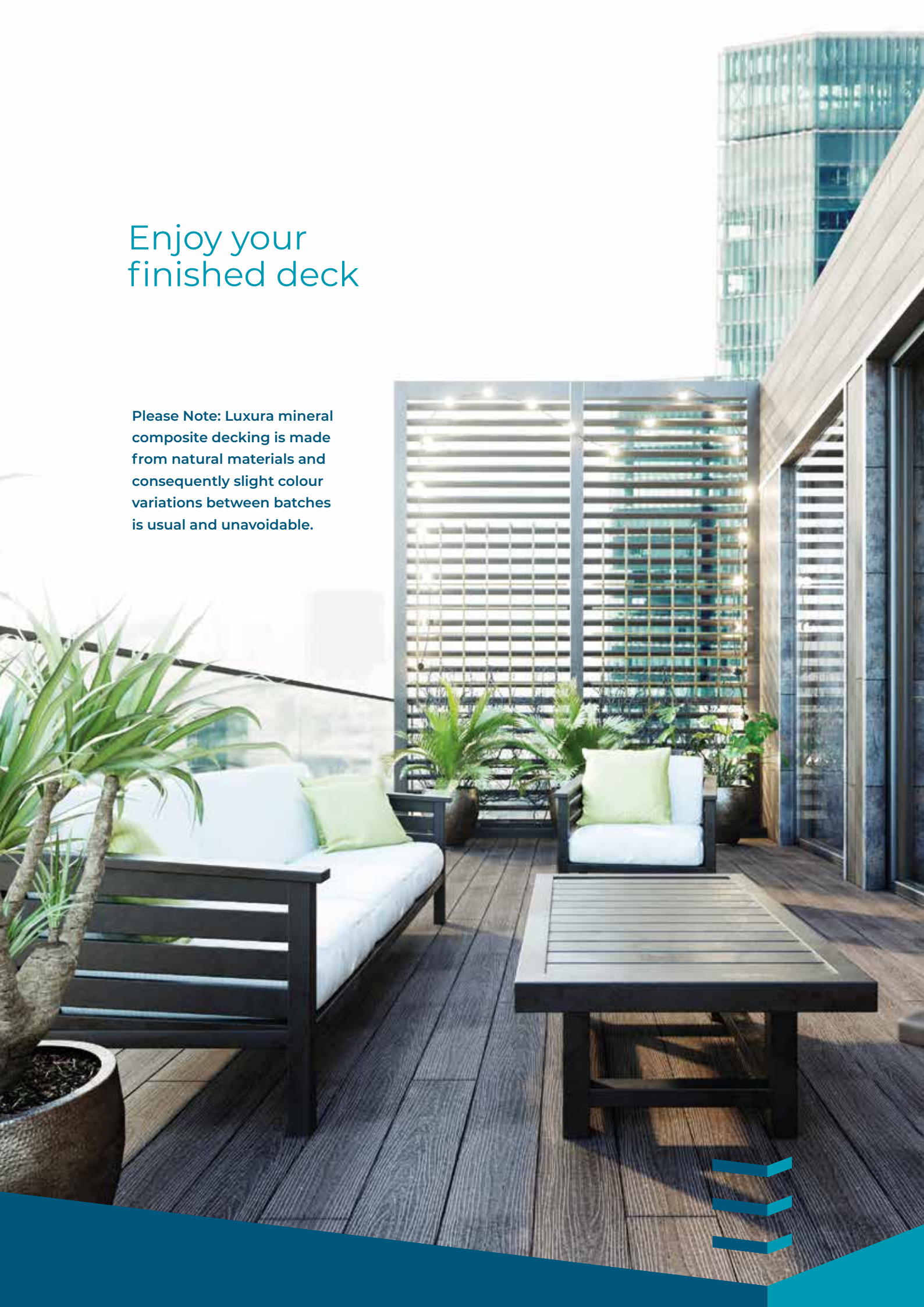
T: +44 (0)3300 94 94 11

E: sales@mydek.com

www.mydek.com

Enjoy your finished deck

Please Note: Luxura mineral composite decking is made from natural materials and consequently slight colour variations between batches is usual and unavoidable.



C FAQ's

- 1. Q: What is the maximum spacings allowed between the substructure rails?**
A: 450mm centres between the rails. This allows for the safe domestic loading of 2kN (approx. 200kgs) point load in the centre of the board.

- 2. Q: What is the maximum overhang from the last substructure rail to the end of the board.**
A: Maximum overhang is 100mm.

- 3. Q: What is the minimum construction height of the substructure rail system?**
A: Box rail and cleat system can achieve a minimum of 35mm. (see technical data sheets for further information).

- 4. Q: What is the maximum height that can be achieved.**
A: Using the BoxRail system with cleat extenders, heights of up to 260mm can be achieved. For taller heights we can help you design structures up to 1500mm high. Talk to our team for more information.

- 5. Q: What is the maximum recommended joist overhang from a pedestal to the end of the joist.**
A: Maximum recommended overhang is 250mm.

- 6. A: How are minor damages or scratches to the boards repaired.**
Q: Minor scratches can be removed using by lightly sanding the surface with abrasive paper and then apply a coating of [Water Seal](#) with a soft lint-free cloth. Chips or heavy surface damage may require boards to be replaced or the damaged section cut off the board length.

- 7. Q: Do we need to allow any gaps between boards when abutting them end to end?**
A: Yes, we recommend leaving a 2-3mm gap between ends of boards.

- 8. Q: Do cut edges need to be sealed or treated in any way?**
A: It is not necessary to seal cut ends. However, if boards are abutted without any gap we recommend applying sealant.

Design and specifications are subject to change without prior notice. All information was correct at time of print.
©MyDek 2026. Ref: Luxura Deck Installation Guide 03/26. All trademarks acknowledged. E&OE.



For further information:

T: +44 (0)3300 94 94 11

E: sales@mydek.com

www.mydek.com

D Care & maintenance

Congratulations! You are lucky enough to have a **MyDek Luxura®** Non-Combustible Decking System!

Your decking is made from a unique mineral composite and has been produced and tested to the highest standards of the industry. This mineral composite will never burn, rot, rust or warp. With simple and regular care, you can relax in the knowledge that your deck is safe and sound for many years to come.

Please be aware that natural raw materials do change colour dependant on the climate that the boards are installed in and will also change dependant on weather at the time – just like any other natural product does.

Here's a few simple do's and don'ts to ensure your decking remains in optimum condition.



Do:



Keep your deck free of dirt and debris by regular sweeping (at least every 2 weeks) with a soft brush.



Try to lift furniture or planters rather than drag them across the deck surface.



Wash your deck down regularly with clean water and a mild detergent such as water and washing up liquid or [Delphis Patio and Stone Cleaner](#) (Environmentally friendly cleaner). We recommend a minimum of 2 times a year. Clean, wet surfaces can be allowed to air dry or can be wiped clean with a soft cloth.



Check your decking carefully once a year to ensure no fixings are working loose, and simply tighten them using the appropriate driver bit if necessary.



Use your balcony and deck safely and enjoy!



Use furniture with rubber or plastic feet to prevent unnecessary scratching of the decking surface.

For further information:

T: +44 (0)3300 94 94 11

E: sales@mydek.com

www.mydek.com





Don't:



Use sharp or abrasive materials to clean your deck (e.g. wire wool, abrasive papers or scrubbing tools). This may cause scratching of the coating which will affect the appearance.



Use furniture with metal feet which can scratch the decking if dragged across the surface.



Use abrasive salt grit for de-icing purposes. Instead, use easily soluble salt.



Use oil/wax sealants, coatings, or polishes on the decking as this may cause the surface to become slippery, especially when wet.



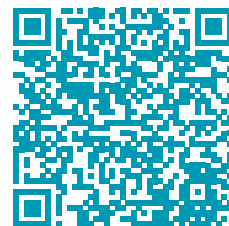
Use aggressive acid or alkaline chemical to clean your deck.



Recommended products



Using one of the following recommended cleaning fluids: [Delphis Eco Patio and Stone Cleaner](#) or [Delphis Eco Multi-Purpose Cleaner](#).



For further information:

T: +44 (0)3300 94 94 11

E: sales@mydek.com

www.mydek.com

?

If:

Scratches or other surface damage: if your decking becomes damaged or scratched, minor scratches or damage may be removed using 1500 grit abrasive paper. Damaged deck boards may be removed and replaced if necessary but always check with your building manager or landlord if you live in a multi-occupancy apartment block. MyDek accepts no responsibility for the unsafe removal of deck boards from balcony environments. If in any doubt, please Contact Us to ask for advice.

If there seems a colour variation in the boards after the installation, we recommend that the boards are lightly jet washed to remove any surface dust or dirt before handing them over to the client, ideally using one of the following recommended cleaning fluids: [Delphis Eco Patio and Stone Cleaner](#) or [Delphis Eco Multi-Purpose Cleaner](#). We also recommend that the boards are stored inside or in a dry location to reduce the variation of colour due to moisture content.

Loses its stain resistance: Your Luxura decking is impregnated with a water-based sealant solution which should last for many years. Whilst not essential, we recommend applying a coat of [Everbuild 402 Water Seal Water Repellent](#) solution every three to five years or as desired to maintain the deck in optimum condition. This water-based impregnation is fast and easy to apply. Using a cloth, it is possible to sufficiently control the flow of the product – particularly when touching-up smaller areas following the repair of scratches.

Accessories

Furniture Anchors

MyDek's decking furniture anchor is designed specifically for MyDek's range of non-combustible decking, for use in locations exposed to high winds such as balconies.

Carefully engineered to withstand very high loadings while being compatible with any 20mm or 25mm thick decking system with 6-8mm gaps. Other fixings are not supported unless evaluated and explicitly approved by MyDek.



For further information:

T: +44 (0)3300 94 94 11

E: sales@mydek.com

www.mydek.com



About MyDek®?

The **MyDek** team harnesses a huge range of experience, creativity, passion and drive to make balconies and terraces safe places to be. Drawn from different areas of the construction industry our team brings together extensive knowledge of specification, technical compliance and outstanding innovation to create a non-combustible decking system that delivers on our mantra of Safe. Smart. Sustainable. **So relax, you're in safe hands.**

Safe. Smart. Sustainable.

Our ethos runs through everything we do. We're passionate to ensure that our products reflect these values and make a significant contribution to residential balconies and terraces as safe and enjoyable places.

Quite simply, you're going to love this.

The philosophy that supports all our products



Safe.

- A1 fire rating for non-combustibility
- Exceptional slip resistance
- Mechanically fixed to eliminate risk of wind uplift
- Maintains a stable temperature range
- Will never warp twist or rot



Smart.

- Natural timber look
- Sounds and feels solid underfoot
- Stain resistant, easy-clean surface
- Can be cut and machined like hardwood



Sustainable.

- Hard wearing mineral composite for ultimate durability
- 30 year limited warranty
- 60 year design life

MYDEK®
Non-combustible decking systems

For further information:

T: +44 (0)3300 94 94 11

E: sales@mydek.com

www.mydek.com