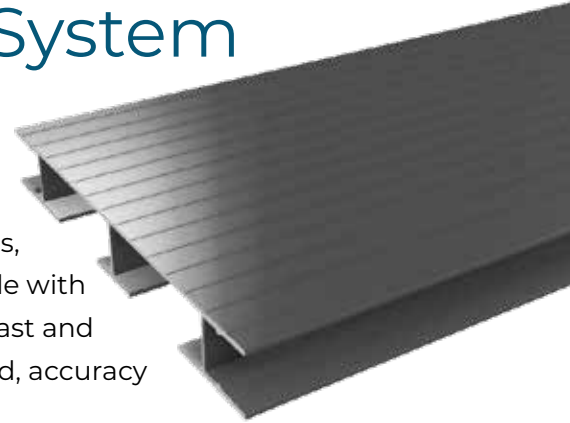


Innova v3 Decking System

Overview

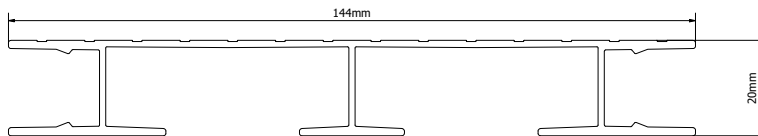
A durable, non-combustible, aluminium decking system designed to enhance balconies and terraces, available in a range of standard finishes. Compatible with the full range of support systems from MyDek for fast and accurate installation, MyDek offers unrivalled speed, accuracy and choice in decking solutions.



FEATURES:

- Fully certified
- Non-combustible
- Lightweight
- Concealed fixings
- Slip resistant
- 30 year warranty

DIMENSIONS:



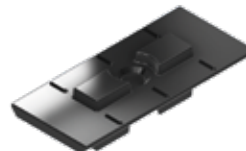
Board width x depth	144 x 20mm (150mm module)
Board length	4.2m standard or made to order (subject to conditions)
Weight	7.99 kg/sqm

MATERIAL:

Board	Aluminium grade 6063-T6
Expansion allowance	1mm per linear metre
Finish	Polyester Powder Coating – min 60 micron Super Durable, Qualicoat Class 2 powder

PRODUCT CODES:

- UB12** Decking board
- UB01** Basic Clip (screw-fixed)
Material: Black coated stainless steel



Granville House Unit E, The Heights Business Park
High Wycombe, HP14 3BC.

T: **+44 (0)3300 94 94 11**

E: sales@mydek.com

www.mydek.com

PERFORMANCE STANDARDS:

QUALITY	STANDARD	VALUE	LIMIT
Fire test (polyester powder coated)	EN 13501 – 1 A1:2013	A2-s1,d0	A2-s1,d0
Deflection – 2KN at 600mm span	EN310	1.21mm	<5mm
Slip resistance - Wet	BS7976 -2 Pendulum Slip Test	38 PTV 56 PTV	>36 >36
Slip resistance - Dry			
Coefficient of thermal expansion	N/A	0.024mm/m/°C	-
Coating Durability	Qualicoat Class 2 powder		-
Accelerated wear test (biomechanical - see appendix 1.1)	TM391:2016	'Very Slight' at 50K 'Slight' at 100K	-
Furniture leg test (scratching)	EN424:2001	No damage Slight transfer	
Coating Adhesion	ISO-0 ASTM-5B	No separation	-
UV Stability	ISO2810	Class 2	3-year Florida
SUSTAINABILITY		VALUE	
Embodied Carbon		0.0517 tonnes/m ²	

COLOUR RANGE:

For full colour range of non-slip textured powder coatings visit www.mydek.com. Colour codes are represented by the last four characters in the product code.

LIGHT REFLECTANCE VALUE:

RAL7016:	LRV 7	RAL7040:	LRV 32
RAL7037:	LRV 21	RAL8014:	LRV 6
RAL7039:	LRV 15	RAL8019:	LRV 7

APPLICATIONS:

For use on balconies, walkways, roof terraces, leisure areas and patios.

INSTALLATION:

Fixed to aluminium structure or MyDek Support Systems with supplied clips.

STORAGE AND HANDLING:

Profiles are packaged with protection against scratching and contamination, and supplied with appropriate support (e.g. stillage or pallet). Ensure that this level of protection is maintained until installation, including storage in dry conditions and support along the length of the profiles. Improper storage may lead to damage that falls outside the warranty.



Granville House Unit E, The Heights Business Park
High Wycombe, HP14 3BC.

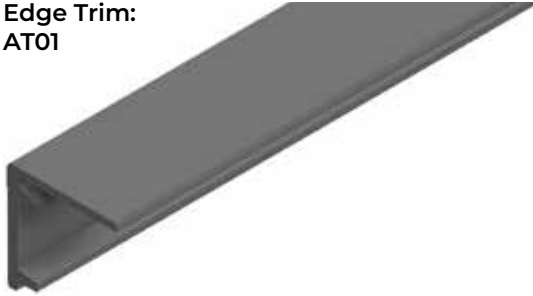
T: +44 (0)3300 94 94 11

E: sales@mydek.com

www.mydek.com

SUPPORTING PRODUCTS

Edge Trim:
AT01



Gutter Insert:
AG01



ACCESSORIES:

For full range of accessories visit www.mydek.com

MANUFACTURER:

MyDek Limited
Granville House Unit E
The Heights Business Park
High Wycombe, HP14 3BG

E: sales@mydek.com
T: **+44 (0)3300 94 94 11**

www.mydek.com

Appendix

1. BIOMECHANICAL ACCELERATED WEAR TEST SATRA TM391:2016

This test has been carried out in accordance with SATRA TM391:2016 for assessing floor coverings using a walking machine, where a standard shoe (having a patterned sole with a tread depth of 5mm ± 0.5mm and Shore A hardness of 54 is mounted on a foot form that is attached to a walking machine. The flooring specimen is subjected to a cyclic walking action from the standard shoe, where the specimen rotates incrementally whilst the forepart is in contact with the sample. These individual footsteps are designed to replicate a mixture of walking in a straight line and turning a corner. The flooring sample under test rotates such that it completes a 360° rotation every 150 footfalls.



Granville House Unit E, The Heights Business Park
High Wycombe, HP14 3BG.

T: **+44 (0)3300 94 94 11**
E: sales@mydek.com

www.mydek.com

2. FURNITURE LEG TEST EN 424:2001

This test simulates the movement of furniture or the likes on floor surfaces, and assesses the impact on the finish of the product both in terms of damage to the surface and transfer of marking onto the surface.

**Results: EN 424:2001 – Resilient floor coverings –
Determination of the effect of simulated
movement of a furniture leg. ⁽²⁾⁽³⁾**

		Direction of manufacture	90° to the direction of manufacture
Type 0 with an applied mass of 32kg	Flatness Deterioration	None	None
	Damage which partially destroys surface	None	None
	Cuts of varying depth	None	None
	Penetrating Edges	None	None
	Transfer of brass	None	None
Type 2 with an applied mass of 100kg	Flatness Deterioration	None	None
	Damage which partially destroys surface	None	None
	Cuts of varying depth	None	None
	Penetrating Edges	None	None
	Transfer of brass	Very slight	Slight
Type 3 with an applied mass of 70kg	Flatness Deterioration	None	None
	Damage which partially destroys surface	None	None
	Cuts of varying depth	None	None
	Penetrating Edges	None	None
	Transfer of brass	None	Slight



Granville House Unit E, The Heights Business Park
High Wycombe, HP14 3BC.

T: **+44 (0)3300 94 94 11**

E: **sales@mydek.com**

www.mydek.com